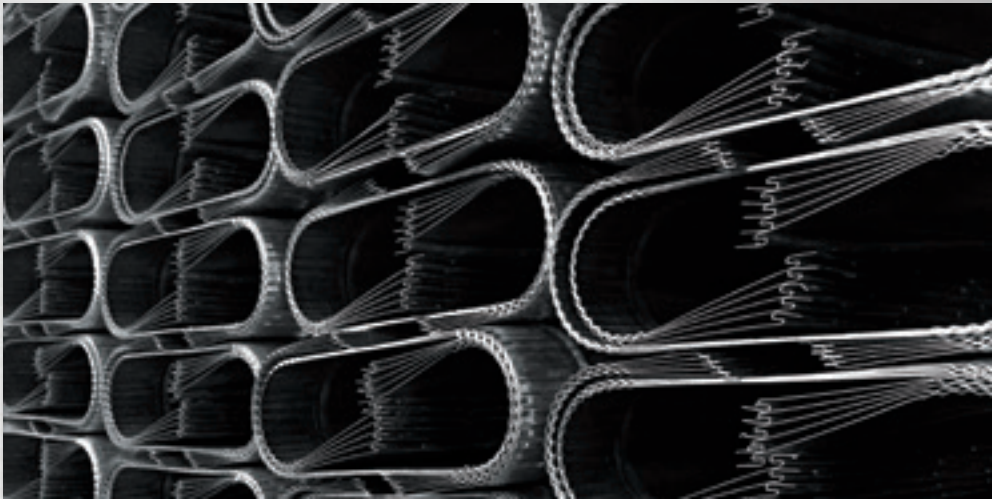
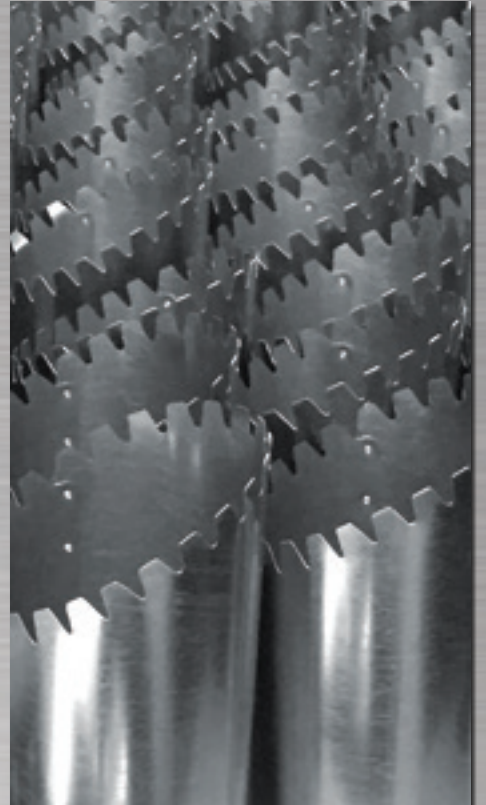


NORTH | SOUTH | MIDWEST | GREAT PLAINS

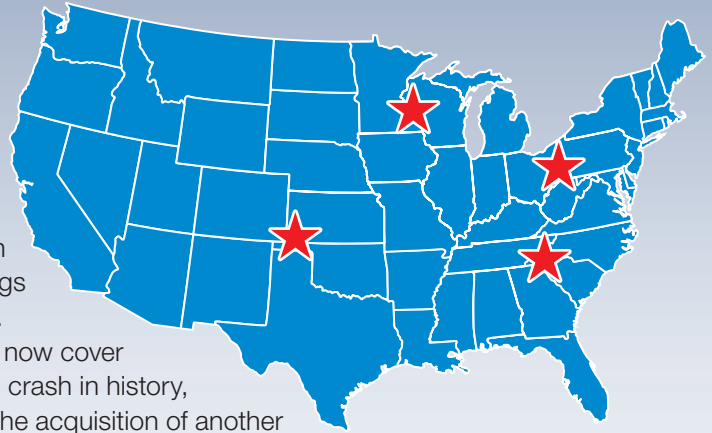


### ABOUT LUKJAN

Lukjan Metal Products has been manufacturing high quality sheet metal pipe, duct and fittings to the Wholesale HVAC Industry since 1964. Lukjan started in a small garage in Conneaut, Ohio and quickly expanded into its now current flagship 250,000 square foot plant approximately 4 miles away in the same town. Seeing expanding opportunity in the southern market, Lukjan purchased a 220,000 square foot building in Kings Mountain, N.C. and began production operations, August 2006.

This greenfield operation expanded Lukjan's service footprint to now cover over twenty states. Having weathered the worst housing market crash in history, Lukjan continued its growth plans in the Midwest markets with the acquisition of another family owned business, Midwest Ducts in March 2016. This facility added another 90,000 square feet and further extended Lukjan's reach to over 25 states. Continued growth in the economy and housing market strength presented another opportunity in the Great Plains market with the purchase of a fourth facility in Sidney, Nebraska in June 2017. Another greenfield operation, Lukjan Great Plains adds another 200,000 square feet of manufacturing capacity and provides Lukjan with access to the HVAC Wholesaler market in over 30 states and Canada.

Even with its rapid growth, Lukjan remains a family owned and operated business following three simple principles established by its founders, Anatol and Natalia Lukjanczuk: **Provide the best quality product at competitive prices backed by exceptional customer service.** These same principles live on today in all aspects of our business under the leadership of Dan Lukjanczuk and Elena Lukjanczuk-Kelly.



### METAL SHIPPING RACKS

Lukjan utilizes both 4' and 8' metal shipping racks for high volume duct and pipe purchases. A summary of our rack policy is as follows:

1. Racks are provided as a service to our wholesalers/distributors for the handling and storage of Lukjan product only.
2. Racks NOT returned within a reasonable timeframe will be invoiced to the wholesaler/distributor of record.
3. Racks sent to customer sites are the responsibility of the wholesaler/distributor of record and will be billed at time of shipping.
4. Racks are currently valued at **\$150.00** (4') and **\$250.00** (8') and may change based on prevailing replacement costs.

Customers are asked to contact Lukjan customer service to arrange pick-up when racks are cleared. Customers are asked to neatly stack cleared racks and provide safe and easy access for Lukjan drivers.

### DAMAGED GOODS

Product **received** in damaged condition can be returned for full credit. Customers have up to 5 days from the product delivery date to contact customer service and arrange for an RMA (Return Memo

Authorization) and schedule pick-up of defective material. Credit will be issued upon inventory of returned goods.

### RETURNS AND RESTOCKING

Lukjan will, at its discretion, accept returns for credit provided the product is in resalable condition and is a standard part. Custom made metal products will not be accepted. All returns are subject to a minimum **25%** restocking and handling fee. Some restock charges may be higher depending on the specific product volume.

### ELECTRONIC DATA INTERCHANGE (EDI)

Lukjan utilizes EDI for ordering, acknowledgement and invoicing. Any customer interested in utilizing EDI can contact our customer service team or their Lukjan sales representative.

### ELECTRONIC INFORMATION

Lukjan asks, as a business courtesy, that any electronic data provided by Lukjan to its customers (pricing, product specifications, etc.) be managed in a confidential manner.

### DISCOUNTS/TERMS

Please inquire regarding discount programs for early payments.

### PACKING SLIP/INVOICE

Items on Lukjan Packing Slips and Invoices match the sequential order of the customer purchase order and if requested, can include the customer part number providing easy product receiving and billing reconciliation

### PRODUCT IDENTIFICATION

Lukjan provides box labeling that includes a product bar code, product description, customer name/address, customer PO#, order date, customer part number and PO sequence number.

### PRODUCT CODES/PRICING

All items in the Lukjan Catalog are identified with a Lukjan Product Code. The Product Code is defined for each item to provide an accurate means to price and order product. A complete catalog price list of over 14,000 items is available on-line at **lukjan.com**

#### Example:

RP05xxyyzzz RP050630060 6" 30GA  
5' Round Pipe, Unboxed

Where: RP05 = Round Pipe, Unboxed  
xx = 06 Pipe Diameter  
yy = 30 Gauge  
zzz = 060 Length

**LUKJAN RESERVES THE RIGHT TO MAKE ADJUSTMENTS AND/OR CHANGES TO POLICIES, PRICES AND PRODUCT AVAILABILITY AT ITS DISCRETION WITHOUT NOTICE.**



# PRODUCT INDEX

DESCRIPTION	CODE	PG.	DESCRIPTION	CODE	PG.	DESCRIPTION	CODE	PG.	DESCRIPTION	CODE	PG.
ADJ. ANGLE DB TAKEOFF	T095	12	DUCTBOARD COLLAR W/DAMPER	DX38	12	OVAL TO ROUND BOOT, ELBOW	OB75	16	SPIRAL ECCENTRIC REDUCER	RX44	20
ADJ. ELBOW DB TAKEOFF	T094	12	ECONO DAMPER 1 HRD-A	RX35	15	OVAL TO ROUND BOOT, END	OB71	16	SPIRAL REGISTER SADDLE	RX65	20
ADJUSTABLE ANGLE	RX50	9	ECONO DAMPER 1 HRD-U	RX36	15	OVAL TO ROUND BOOT, STRAIGHT	OB72	16	SPIRAL REGISTER SADDLE W/ADH	RX64	20
ADJUSTABLE DUCT HANGERS	DX20	22	ECONO DAMPER 2 HRD-A	RX37	15	OVAL TOE KICK BOOT	OB95	17	SPIRAL SADDLE FLUE W/45 TO	RX60	20
ADJUSTABLE ELBOW	RX53	9	ECONO DAMPER 2 HRD-U	RX38	15	OVAL TOP TAKEOFF	OX60	17	SPIRAL SADDLE FLUE W/90° TO	RX61	20
ADJUSTABLE ELBOW TAKEOFF	T093	10	END CAPS	DX44	4	OVAL TOP TAKEOFF, DUCTBOARD	OX62	17	SQ-RD MOBILE HOME BOX	RB55-M	6
ALUMINUM ANGLE	AX50	24	END CAPS, 2" EXT.	DX45	4	OVAL VERTICAL ANGLE	OX52	16	SQUARE ADHESIVE TAKEOFF	TA39	11
ALUMINUM COLLAR	AX10, AX11	24	FILTER FRAME BOX	CA74	6	OVAL VERTICAL ELBOW	OX54	16	SQUARE ADJ. ADHESIVE TAKEOFF	TA10	11
ALUMINUM DRYER VENTS	AX74	22	FILTER FRAME, WISE	CA72	6	PIPE HANGER	DX14	22	SQUARE ADJ. DUCTBOARD TAKEOFF	T014	12
ALUMINUM ELBOW	AX53	24	FILTER FRAMES (1" Filters)	CA20	6	PLENUM CORNERS	PX20	7	SQUARE ADJUSTABLE TAKEOFF	T010	10
ALUMINUM FRESH AIR INTAKE	AX64	22	FLARED TEES	RX70	14	PLENUM RAIL	PX16	7	SQUARE ADJUSTABLE TO, ROTH	T016	10
ALUMINUM LONG COLLAR	AX12	24	FLEX CONNECTOR	RX58	9	PVC 45° SADDLE	VX62	21	SQUARE CONICAL ADHESIVE TO	TA38	11
ALUMINUM LONG RADIUS ELBOW	AX54	24	FLEXIBLE DUCT CONNECTOR	DX36	5	PVC 90° SADDLE	VX63	21	SQUARE NON-ADJ. ADHESIVE TO	TA20	11
ALUMINUM PIPE	AP01	24	FLUE WYE	RX80	14	PVC ANGLE	VX50	21	SQUARE NON-ADJ. DB TAKEOFF	T018	12
ALUMINUM RAIN CAP	AX28	24	FURNACE BOX (OPEN TOP)	CA50	6	PVC COATED STEEL SHEETS	VS01	26	SQUARE SIDE DB TAKEOFF	T039	13
ALUMINUM REDUCER	AX41	24	FURNACE SUPPORT BOX	CA40	6	PVC CONNECTOR	VX58	21	SQUARE SIDE TAKEOFF	T038	10
ALUMINUM SHEETS	AS01	26	GALV. FRESH AIR INTAKES	CA64	22	PVC ECCENTRIC REDUCER	VX44	21	SQUARE TOP NON-ADJ. TAKEOFF	T050-52	10
ALUMINUM TEE	AX70	24	GALVANIZED CHIMNEY THIMBLE	RX05	26	PVC ELBOW	VX53	21	SQUARE-ROUND BOOT	RB55	6
ALUMINUM TRIM COLLAR	AX09	24	GALVANIZED DRAWBAND	RX01	26	PVC END CAP	VX20	21	STACK ADAPTER, ELBOW	SX81	19
ANGLE STRIPS	DX18	22	GALVANIZED DRYER VENTS	EX74	22	PVC FLUE WYE	VX80	21	STACK ADAPTER, STRAIGHT	SX80	19
BASEMENT BOOT	RB45	8	GALVANIZED RAIN CAP	RX28	26	PVC PERIMETER BOOT	VB70	21	STACK BOOT, ANGLE	SB40	18
BLACK ANGLE	BX50	25	GALVANIZED ROOF FLASHING	EX20	26	PVC REGISTER BOOT, ELBOW	VB30	21	STACK BOOT, ELBOW	SB30	18
BLACK CAP	BX21, BX22	24	GALVANIZED ROUND PIPE	RP01, RP05	5	PVC REGISTER BOOT, END	VB01	21	STACK BOOT, END	SB10	18
BLACK CAP REDUCER	BX23, BX24	24	GALVANIZED SPIRAL ANGLES	RX50	20	PVC REGISTER BOOT, STRAIGHT	VB20	21	STACK BOOT, STRAIGHT	SB20	18
BLACK DRAWBAND	BX01	24	GALVANIZED SPIRAL ELBOWS	RX53-GS	20	PVC REGISTER SADDLE	VX61	21	STACKHEAD	SX75	19
BLACK ELBOW	BX53	25	GALVANIZED SPIRAL END CAPS	RX22	20	PVC SHOE TAP	VX66	21	STACKHEAD, DOUBLE	SX73	19
BLACK PIPE	BP01	24	GALVANIZED SPIRAL PIPE	GP01	20	PVC SPIRAL PIPE	VP01	21	STACKHEAD, LONG	SX72	19
BLACK STEEL SHEETS	BS01	26	GALVANIZED SPIRAL REDUCER	RX44	20	PVC STARTING COLLAR	VX11	21	STACKHEAD, LONG W/EARS	SX71	19
BLACK TAPERED INCREASER	BX43	25	GALVANIZED STEEL SHEETS	GS01	26	PVC TEE	VX70	21	STACKHEAD, OUT OF WALL	SX74	19
BLACK TAPERED REDUCER	BX40, BX41	24	GALVANIZED TRIM COLLAR	RX09	26	PVC TOUCH-UP PAINT	VX90	21	STACKHEAD, RETURN AIR	SX76	7
BLACK TEE	BX70	25	HIGH EFFICIENCY OFFSET TO	TA57	11	RANGE HOOD	RP06, RP07	5	STACKHEAD, SHORT	SX70	19
BLACK TRIM COLLAR	BX10	24	HORIZONTAL (LONGWAY) ANGLE	DX27	4	RECTANGULAR DUCT	DT01, DT02, DT03	4	STAINLESS STEEL ADJ. ANGLE	NX50	25
BOOT FRAME	RB70	8	HORIZONTAL (LONGWAY) ELBOW	DX25	4	RECTANGULAR DUCT DAMPERS	DX50	5	STAINLESS STEEL ADJ. ELBOW	NX53	25
BOOT RAIL	RB66	8	INSUL. RETURN AIR BOX W/COLLAR	CA60	23	RECTANGULAR NON-ADJ. TAKEOFF	T020	10	STAINLESS STEEL CAP	NX21	25
BRANCH WYE	RX81	14	INSUL. STACKHEAD, RETURN AIR	SX76	23	RECTANGULAR START COLLAR	DX33	4	STAINLESS STEEL CONNECTOR	NX58	25
BRANCH WYE, DOUBLE ADJ.	RX83	14	INSULATED BOXES	DX46	23	REDUCERETTE	DX79	5	STAINLESS STEEL DRAWBAND	NX01	25
BRANCH WYE, SINGLE ADJ.	RX82	14	INSULATED CEILING BOX - ANGLE	RB65	23	REDUCING WYE	RX79	14	STAINLESS STEEL RAIN CAP	NX28	25
BRIDGE SPEARS	RX95	22	INSULATED CEILING BOX - SIDE	RB61	23	REGISTER BOOT W/CRD	RB10, RB20, RB30	8	STAINLESS STEEL SHEETS	NS01	26
BUTTERFLY DAMPER	RX59	15	INSULATED CEILING BOX - TOP	RB62	23	REGISTER BOOT, ANGLE	RB40	8	STAINLESS STEEL START COLLAR	NX11	25
CAP INCREASER	RX25	14	INSULATED FURNACE BOX	CA50	23	REGISTER BOOT, ELBOW	RB30, RB31, RB32	8	STAINLESS STEEL TEE	NX70	25
CAP REDUCER	RX23, RX24	14	INSULATED FURNACE SUPPORT BOX	CA40	23	REGISTER BOOT, END	RB10, RB11, RB12	8	STAINLESS STEEL TRIM COLLAR	NX10	25
CEILING BOOT SIDE	RB60	13	INSULATED PLENUM TOPS	PX18	23	REGISTER BOOT, PERIMETER	RB43	8	STAINLESS TAPERED REDUCER	NX41	25
CEILING BOX ANGLE	RB65	13	INSULATED PLENUMS (NO TOP)	PL11	23	REGISTER BOOT, POOR BOY	RB20	8	STANDING "S" CLEATS	DX13	4
CEILING BOX SIDE	RB61	13	INSULATED RECTANGULAR DUCT	DT01, DT02, DT03	23	REGISTER BOOT, STRAIGHT	RB20, RB21, RB22	8	STARTER BASE	CA42	6
CEILING BOX TOP	RB62	13	JIMMY BOOT	SX96	19	RETURN AIR BOX - INSULATED	CA59	7	STRAPPING COIL	DX16	22
COLD AIR FRAMES	CA16	7	JOIST BLOCKOFF	PX06	7	RETURN AIR BOX - INSULATED	CA59	23	SUPPORT BRACKETS	DX17	22
COLD AIR GROUND	CA19	7	JOIST HEAD	PX07	7	RETURN AIR BOX W/COLLAR	CA60	7	SWIVEL TEES	RX71	14
COLD AIR RETURN BOOTS	CA12	6	JOIST HEADER PLATE	PX05	7	RETURN AIR FRAME STRIPS	CA62	7	TABLOC DB COLLAR W/DAMPER	DX39	12
COLD AIR RETURN KITS	CA10	6	JOIST PANNING SHEETS	PS40	7	RETURN AIR PAN, NO COLLAR	CA58	7	TABLOC DUCTBOARD COLLAR	DX77	12
CONICAL SPIN-IN TAKEOFF	DX69	10	LONG CLINCH STARTING COLLAR	RX14	9	RETURN AIR PAN, NO COLLAR	CA58	23	TABLOC LONG STARTING COLLAR	RX12T, RX13T	9
CUSTOM SIZED PLENUMS	PL10	7	LONG RADIUS ELBOW	RX54	9	ROUND ADHESIVE TAKEOFF	TA40	11	TAPERED INCREASER	RX43	14
DAMPER CLIPS	HD05	15	LONG ROTH STARTING COLLAR	RX16	9	ROUND ADJ. ADHESIVE TAKEOFF	TA30	11	TAPERED REDUCER	RX40, RX41	14
DAMPER DISK BLANKS	HD06	15	LONG STARTING COLLAR	RX12, RX13	9	ROUND ADJ. DB TAKEOFF	T031	12	THRU BOX	RB92	8
DAMPER EXTENSION KITS	RX30	15	LUKJAN PRODUCT CATALOG	LC01	26	ROUND ADJ. DB TAKEOFF	T033	10	TOE KICK BOOT W/COLLAR	RB95	8
DAMPER HANDLES	HD04	15	METAL DRAIN PANS	CA30	6	ROUND ADJUSTABLE TAKEOFF	T030	10	TOE KICK BOX	RB94	8
DAMPER HARDWARE KITS	HD01	15	NON-ADJ. DB TAKEOFF W/1" RISE	T054	12	ROUND BOOT FRAME	RB71	8	TOP SQ. ADHESIVE TAKEOFF	TA51	11
DAMPER TUBES	RX39	15	OFFSET STACK	SX94	19	ROUND CONICAL ADHESIVE TO	TA60	11	TRANSITION	DX82	5
DAMPER W/ 1 HARDWARE	RX31	15	OFFSET START COLLAR	DX31	4	ROUND END CAP	RX21, RX22	9	TRIANGLE BOX	DX47	5
DAMPER W/ 2 HARDWARE	RX32	15	OLD STYLE TEES	RX75	14	ROUND FLEX CONN	DX36R	9	"U" CHANNELS	DX08	22
DAMPER WASHERS	HD02	15	OVAL ADAPTER	OX70	17	ROUND SADDLE ADHESIVE TO	TA09	11	UNIVERSAL PLENUM SIDE	PX14	7
DAMPER WINGNUTS	HD03	15	OVAL ADHESIVE TAKEOFF	OX40	17	ROUND SIDE TAKEOFF	T036	10	UNIVERSAL PLENUM TOPS	PX18	7
DB METAL BOOT FACE	CA75	13	OVAL BOOT, ANGLE	OB40	17	ROUND SPIN-IN TAKEOFF	DX70	10	USER MANUAL HOLDER	CA90	7
DB RECT. STARTING COLLAR	DX35	13	OVAL BOOT, ELBOW	OB30	17	ROUND SPIN-IN TO W/SCOOP	DX72-75	10	VERTICAL (SHORTWAY) ANGLE	DX23	4
DB TWIST-IN COLLAR	DX60	12	OVAL BOOT, END	OB10	17	ROUND STAINLESS STEEL PIPE	NP01	25	VERTICAL (SHORTWAY) ELBOW	DX21	4
DB TWIST-IN COLLAR w/SCOOP	DX62-65	12	OVAL BOOT, STRAIGHT	OB20	17	ROUND-STACK TRANSFORMER	T080	10	WALLSTACK, 2PC. SNAP LOCK	SK01	18
DOUBLE DB TAKEOFF	T045	13	OVAL CAP	OX21	17	"S" CLEATS	DX12	4	WALLSTACK REVERSE ELBOW	SX24	18
DOUBLE TAKEOFF	T040-42	10	OVAL DUCTBOARD START COLLAR	OX76	17	SHOE TAP	RX66	20	WALLSTACK SIDE TAKEOFF	SX42	18
DRIVE CLEATS	DX10	4	OVAL FIRE STOP	OX90	17	SHORT STARTING COLLAR	RX10, RX11	9	WALLSTACK STARTING COLLAR	SX33	18
DRYER WALL BOXES	EX30	22	OVAL HORIZONTAL ANGLE	OX51	16	SHORT START COLLAR W/RING	RX10R, RX11R	9	WALLSTACK TOP TAKEOFF	SX41	18
DUCT ADAPTER	DX80	5	OVAL HORIZONTAL ELBOW	OX53	16	SOLID COIL BOX	PX22	7	WALLSTACK VERTICAL ANGLE	SX23	18
DUCT HANGER "L" STYLE	DX19	22	OVAL PIPE	OP01	16	SPIRAL CONNECTOR	RX58	20	WALLSTACK VERTICAL ELBOW	SX21	18
DUCT HANGER "Z" STYLE	DX14	22	OVAL STACKHEAD	OX10	17				WELDED COND UNIT BRACKET	EX40	26
DUCT HANGER STRIPS	DX15	22	OVAL STACKHEAD, DOUBLE	OX11	17						
DUCT REDUCERS	DX41	5	OVAL STACKHEAD, SPLIT	OX12	17						
DUCT SIZING CALCULATOR	LC02	26	OVAL START COLLAR	OX63, OX64	17						
DUCTBOARD COLLAR	DX76	12	OVAL TO OVAL REVERSE ELBOW	OB78	16						
DUCTBOARD COLLAR BOX	DX83	13									

**NORTH P** 440.599.8127  
**F** 440.593.6237

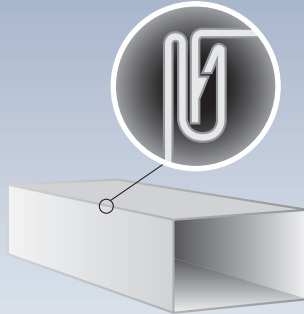
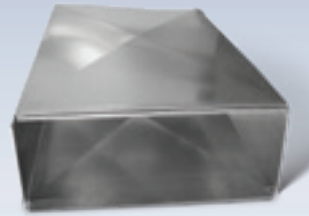
**SOUTH P** 704.734.0544  
**F** 704.734.0993

**MIDWEST P** 800.596.4400  
**F** 715.455.1110

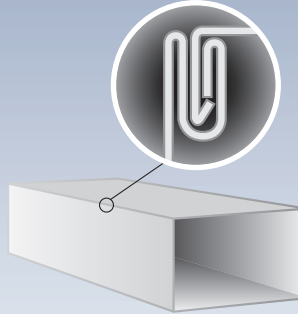
**GREAT PLAINS P** 308.210.9710  
**F** 308.210.9720

# DUCT AND DUCT FITTINGS

Fittings list DRIVE dimension first, SLIP second while Duct lists SLIP first and DRIVE second.



Button Lock



E-LOCK

BUTTONLOCK is our standard duct offering providing a strong, tight seam connection.

ELOCK offers the same strength and tight seal but eliminates the raw edge along the longitudinal male seam providing a smooth edge reducing potential worksite or warehouse injuries. The ELOCK also adds rigidity to the duct surface.

RACK QUANTITIES				
	4 FT. & 5 FT. DUCT		8 FT.	
	X 8	X 10	X 12	X 8
8	180			180
10	150	90		150
12	150	120	120	150
14	160	120	120	160
16	120	90	90	120
18	120	80	80	120
20	100	80	80	100
22	100	80	80	100
24	100	80	80	100
25	100	80		100
26	100			100
28	80			80
30	80			80
32	80			80

## RECTANGULAR DUCT

### Seam Lock Options:

Buttonlock, E-LOCK and Slide Lock  
Joint Connections: S&D or THOR

DT01<sub>xyyyz</sub> 26GA

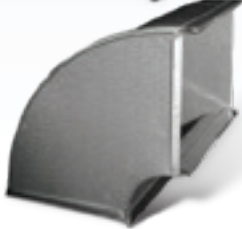
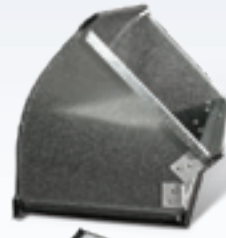
DT02<sub>xyyyz</sub> 28GA

DT03<sub>xyyyz</sub> 24GA

xx = 08-30 (Slip dimension)  
yy = 08, 10, 12 (Drive dimension)  
zz = 33, 36, 48, 60, 96 (Length)  
Standard dimensions listed above.  
Call for special sizes and prices.  
Standard is Button Lock with S&D



SQUARE THROAT



ROUND THROAT



## END CAPS, 2" EXT.

DX45<sub>yyxx</sub> (512)

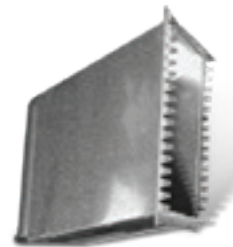
yy = 04-12 (Drive dimension)  
xx = 08-32 (Slip dimension)



## END CAPS

DX44<sub>yyxx</sub> (512)

yy = 04-18 (Drive dimension)  
xx = 08-30 (Slip dimension)



## OFFSET START COLLAR

DX31<sub>yyxx</sub> (519)

yy = 08,10,12 (Drive dimension)  
xx = 08-32 (Slip dimension)  
Standard offset 3"



## RECTANGULAR START COLLAR

DX33<sub>yyxx</sub> (520)

yy = 04,06,08,10,12,14,15,18 (Drive dimension)  
xx = 08-32 (Slip dimension)

## DRIVE CLEATS

DX10<sub>xxxxy</sub>

xxx = 06-120 (Length)  
yy = 28, 26, 24 (GA)



## "S" CLEATS

DX12<sub>xxxxy</sub>

xxx = 06-120 (Length)  
yy = 28, 26, 24 (GA)



## STANDING "S" CLEATS

DX13<sub>xyyyzz</sub>

x = 1 (1" Hem) or 5 (5/8" Hem)  
yyy = 60, 96, 120 (Length)  
zz = 24 (GA, Blank = 26)

Example: DX135120 = 5/8" x120" 26GA

## VERTICAL (SHORTWAY) ELBOW

DX21<sub>yyxx</sub> (307)

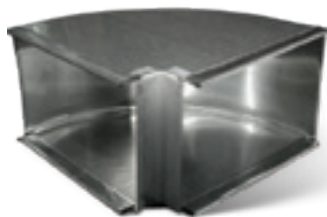
yy = 08, 10, 12, 14, 16, 20 (Drive dimension)  
xx = 08-32 (Slip dimension)

## VERTICAL (SHORTWAY) ANGLE

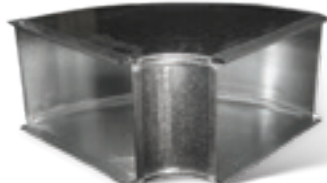
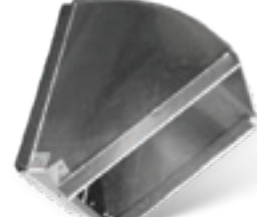
DX23<sub>yyxx</sub> (314)

yy = 08, 10, 12, 14 (Drive dimension)  
xx = 08-32 (Slip dimension)

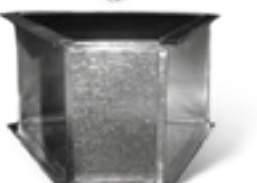
Lukjan can install Turning Vanes on any duct fitting. Call for more info.



SQUARE THROAT



ROUND THROAT



## HORIZONTAL (LONGWAY) ELBOW

DX25<sub>yyxx</sub> (525)

yy = 08,10,12,14,16,18,20 (Drive dimension)  
xx = 08-32 (Slip dimension)

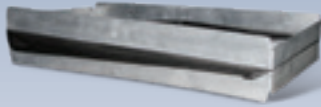
## HORIZONTAL (LONGWAY) ANGLE

DX27<sub>yyxx</sub> (532)

yy = 08,10,12,14 (Drive dimension)  
xx = 08-32 (Slip dimension)



## DUCT AND DUCT FITTINGS (CONT.)



### FLEXIBLE DUCT CONNECTOR

**DX36**<sub>yyxx</sub>

yy = 08-20 (Drive dimension)

xx = 08-24 (Slip dimension)

Isolates furnace vibration from duct system.



### DUCT REDUCERS

**DX41**<sub>yyxxbbaa</sub> (533)

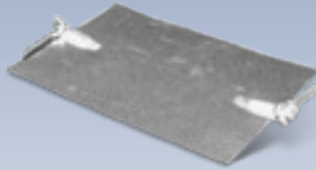
yy = 06-18 (Drive dimension, larger end)

xx = 08-30 (Slip dimension, larger end)

bb = 06-18 (Drive dimension, smaller)

aa = 08-28 (Slip dimension, smaller)

**Options:** C = Centerline reducer

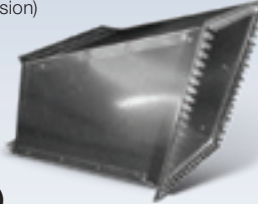


### RECTANGULAR DUCT DAMPERS

**DX50**<sub>yyxx</sub>

yy = 8, 10, 12 (Drive dimension)

xx = 08-50 (Slip dimension)



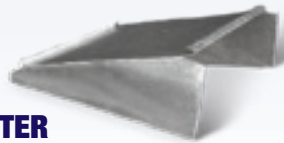
### TRANSITION

**DX82**<sub>yyxx</sub> (518)

xx = 08-38 (Slip dimension)

yy = 8, 10, 12 (Drive dimension)

Add "D" for Transition with Damper



### DUCT ADAPTER

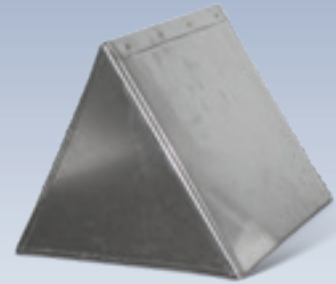
**DX80**<sub>aayy</sub> (534)

aa = 02, 04, 06, 08, 10, 12 (Duct reduction)

yy = 8, 10, 12 (Drive dimension)

**Example:** 24x8 to 18x8

Need 6" reduction on 8" Drive = DX800608



### TRIANGLE BOX

**DX47**<sub>xyyyzzaa</sub>

xx = 10-24 (Edge 1 dimension)

yy = 10-24 (Edge 2 dimension)

zz = 10-24 (Edge 3 dimension)

aa = 06-24 (Height)

Used in Flexduct distribution systems



### REDUCERETTE

**DX79**<sub>aayy</sub>

aa = 02, 04, 06, 08, 10, 12 (Duct reduction)

yy = 8, 10, 12 (Drive dimension)

**Example:** 24x8 to 18x8

Need 6" reduction on 8" Drive = DX790608

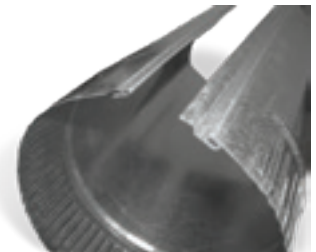
## ROUND PIPE

DIAM.	RACK QUANTITIES 5 FT. ROUND PIPE	
	UNBOXED	BOXED
3	550	
4	630	480
5	480	350
6	350	250
7	240	160
8	200	150
9	160	
10	150	
12	120	
14	80	

All sizes 10/Bundle except 3" at 5/Bundle.  
4"- 8" Sizes Boxed or Unboxed.  
All Sizes over 8" Unboxed.  
Beaded Pipe Available.  
3" and 4" 10' section available assembled  
for extra charge.

New Quik-Seal pipe saves your customers time and money by eliminating the need to seal the longitudinal lock seam. Installation time, expensive tapes and mastic supplies are reduced providing a clean, high quality look.

UL Classified  
Polymer-based  
Sealant



### QUIK-SEAL ROUND PIPE

**RP06**<sub>xxxyyzzz</sub>

**RP07**<sub>xxxyyzzz</sub> (Unboxed 4" - 8")

xx = 04-16 (Diameter)

yy = 30, 26, 24 (GA)

zz = 036, 048, 060, 120 (Length)

### GALVANIZED ROUND PIPE

**RP01**<sub>xxxyyzzz</sub>

**RP05**<sub>xxxyyzzz</sub> (Unboxed 4" - 8")

xx = 03-32 (Diameter)

yy = 31, 30, 28, 26, 24, 22 (GA)

zz = 012, 024, 036, 048, 060, 120 (Length)

Options: Buttonlock and Snaplock

Boxed in 4"-8", A = Assembled for 120" lengths  
(3 & 4" only)



Button Lock



Quik-Seal Button Lock

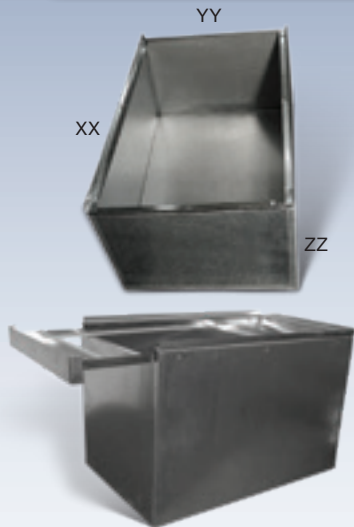


Snap Lock



Quik-Seal Snap Lock

	GA	DIAMETER	LENGTH	LOCK TYPE
STANDARD	30	ALL	2', 10'	BUTTONLOCK
	30	3", 4", 5"	5'	BUTTONLOCK
	30	6" & ABOVE	5'	SNAPLOCK
	28	ALL	2' - 5'	SNAPLOCK
	26	ALL	2' - 5'	SNAPLOCK
	24	ALL	2' - 5'	SNAPLOCK
OPTIONAL	30	6" & ABOVE	5'	BUTTONLOCK



## FURNACE BOX (OPEN TOP)

**CA50**<sub>xyyyz</sub>

xx = 14-40 (Box Depth)

yy = 14-28 (Box Width)

zz = 06-24 (Box Height)

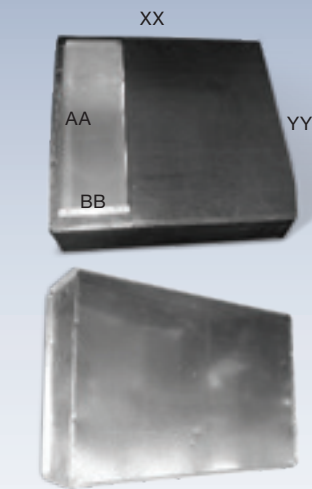
Standard w/ 1/2" flange along opening edge

### Options:

F = 1" Filter Slot, D = Snap on Door

ST = Sliding Filter Tray, H = Hinged Door

Insulated available, see page 22.



## FURNACE SUPPORT BOX

**CA40**<sub>xyy</sub>

Solid Style 12" High

**CA40**<sub>xyyyaabb</sub>

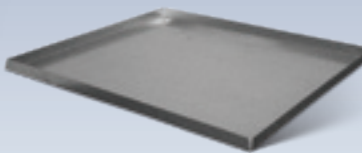
Cutout Style 10" High

xx = 18-48 (Overall Box Length)

yy = 17-30 (Overall Box Width)

aa = 24, 25 (Cutout Length)

bb = 08, 10, 12 (Cutout Width)



## STARTER BASE

**CA42**<sub>xyy</sub>

xx = 13-22 (Width)

yy = 20-30 (Length)

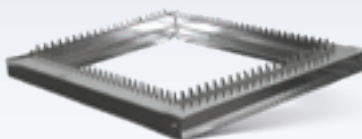
## FILTER FRAME, WISE

**CA72**<sub>xyyyz</sub>

xx = 14, 16, 20, 25 (Filter Height)

yy = 20, 24, 25, 30 (Filter Length)

z = 1, 3 (Filter Width)



## FILTER FRAMES (1" FILTERS)

**CA20**<sub>xyyyz</sub>

xx = 14, 16, 20, 25 (Filter Height)

yy = 20, 24, 25, 30 (Filter Length)

z = A, B, C, D (Style)

A (Teeth Flange one side, Plain Flng other)

B (Teeth Flng one side, Flat other)

C (Plain Flng one side, Flat other)

D (Plain Flange both sides)

### Options:

Slide on Door, Hinged Door



## FILTER FRAME BOX

**CA74**<sub>xyyyz</sub>

xx = 14-25 (Filter Height)

yy = 20-25 (Filter Length)

z = 1, 3, 5, 6, 7 (Filter Width)

Hemmed both faces standard.

**Options:** SL=Sliding Door, H= Hinged

## METAL DRAIN PANS

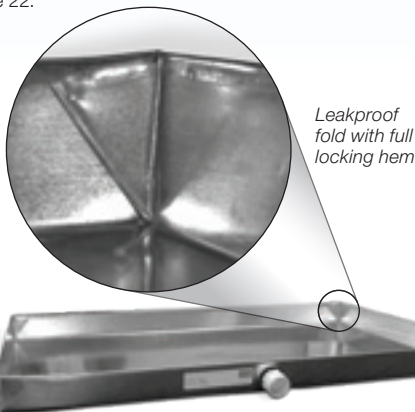
**CA30**<sub>xyyyz</sub>

xx = 20-38 (Width)

yy = 24-80 (Length)

zz = 26, 24 (GA)

Standard w/one drain plug on long side



Leakproof fold with full locking hem



## SQUARE-ROUND BOOT

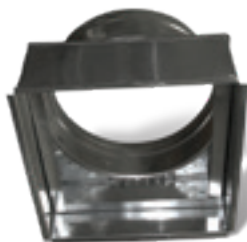
**RB55**<sub>xyyyz</sub> (573)

xx = 03-21 (Width)

yy = 06-30 (Depth)

zz = 04-24 (Round Takeoff Diameter)

**Options:** Flange Out, RAW, Offset Design



## SQ-RD MOBILE HOME BOX

Same as SQ-RD BOOT but with filter ledge on inside

**RB55**<sub>xyyyz</sub>**M** (573M)

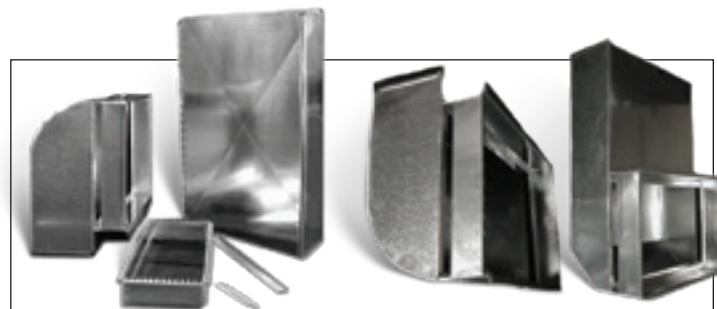
xx = 03-21 (Width)

yy = 06-30 (Depth)

zz = 04-24 (Round Takeoff Diameter)

**Options:** Flange Out, RAW

Mobile Home Kits available and include filter, grill and butterfly damper



## COLD AIR RETURN KITS

**CA10**<sub>xyyyaabb</sub>

xx = Furnace cutout larger

yy = Furnace cutout smaller

aa = CA Drop Slip dimension

bb = CA Drop Drive dimension

### KITS INCLUDE:

(1) Start Collar, (2) jts 32" Duct, (1) CA Boot, (2) S Cleats, (6) Drive Cleats

## COLD AIR RETURN BOOTS

**CA12**<sub>aabbxyy</sub>

xx = Furnace cutout larger

yy = Furnace cutout smaller

aa = CA Drop Slip dimension

bb = CA Drop Drive dimension

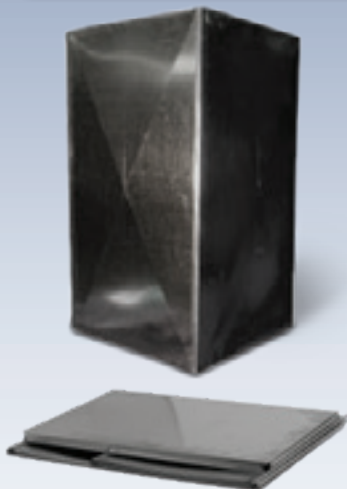
### Return Air Boot Options:

Round or Straight back  
Top or Side load filter slot  
Snap-on filter doors

Flange w/adhesive to assist installation  
Magnetic filter slot cover  
Slide-on filter cover



## FURNACE/AIR HANDLER FITTINGS (CONT.)



### CUSTOM SIZED PLENUMS

#### PL10<sub>xyyyz</sub>

xx = 10-28 (Plenum Width)

yy = 12-30 (Plenum Depth)

zz = 12-60 (Plenum Height)

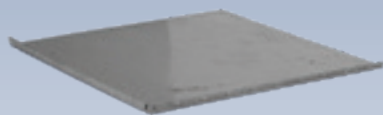
Standard 4 sides, 1 cap, x-broke

**Options:** Double Top, Two Piece Designs, Flange In/Out, Hem,

Fractional sizes end with A, B, etc.

**Example:** 16.5x20.5x48 = PL10162048A

Insulated Plenums available.  
See page 23



### PLENUM RAIL

#### PX16<sub>xyyy</sub>

xx = 10-28 (Plenum Width)

yyy = 046 or 056 (Plenum Length)



### UNIVERSAL PLENUM SIDE

#### PX14<sub>xxzz</sub>

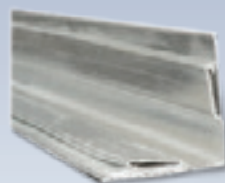
xx = 10-28 (Plenum Width)

zz = 12-60 (Plenum Height)



### USER MANUAL HOLDER

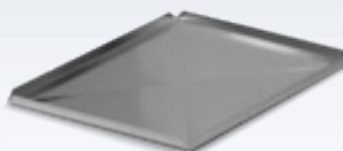
#### CA9001



### PLENUM CORNERS

#### PX20<sub>xxx</sub>

xx = 36, 60, 120 (Length)



### UNIVERSAL PLENUM TOPS

#### PX18<sub>xyyy</sub>

xx = 10-28 (Plenum Width)

yy = 12-36 (Plenum Length)



### COLD AIR FRAMES

#### CA16<sub>xyyyz</sub>

xx = 10-40 (Opening width)

yy = 04-24 (Opening height)

zz = Overall frame width (16" or 24")

Standard is 4" + opening width



### SOLID COIL BOX

#### PX22<sub>xyyyz</sub>

xx = 16-24 (Box Width)

yy = 20-28 (Box Depth)

zz = 15-22 (Box Height)

## SUPPLY/RETURN AIR PRODUCTS



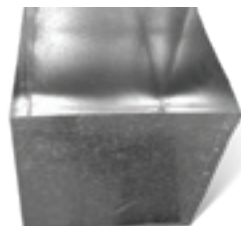
### SUPPLY/RETURN AIR PAN, NO COLLAR

#### CA58<sub>xyyyz</sub>

xx = 10-24 (Width)

yy = 10-24 (Length)

zz = 04-16 (Height, Standard = 4")



### SUPPLY/RETURN AIR BOX - NO COLLAR

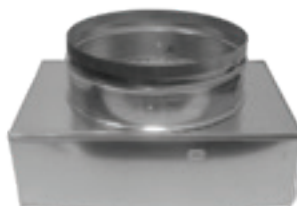
#### CA59<sub>xyyyz</sub> No Collar

xx = 10-24 (Width)

yy = 10-24 (Length)

zz = 10-24 (Height, Standard = 6")

Specify R4, R6, R8 or with Flange (F)



### RETURN AIR BOX W/COLLAR

#### CA60<sub>xyyyz</sub> w/Collar

xx = 06-24 (Width)

yy = 06-24 (Length)

zz = 06-20 (Collar diameter)

Standard Height 6"



### STACKHEAD, RETURN AIR

#### SX76<sub>xyyyaabb</sub>

xx = 14, 16, 20, 25 (Wall register width)

yy = 20, 24, 25 (Wall register height)

aa = 14, 16, 20, 25 (Floor opening width)

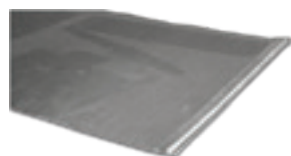
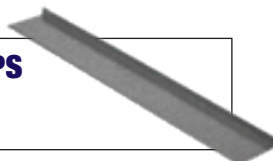
bb = 10, 12 (Floor opening length)

xx = aa typical, Standard RAW edges, specify flange on floor opening

### COLD AIR GROUND/COLD AIR STRIPS

#### CA19<sub>xx</sub> (feet) / CA62<sub>yy</sub> (inches)

xx = 05, 08, 10 yy = 16, 30, 60, 96



### JOIST PANNING SHEETS

#### PS40<sub>xyyy</sub>

xx = 16-35 (Width)

yyy = 030-048 (Length)

Standard 30GA, Options: U = Unboxed



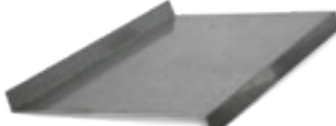
### JOIST HEADER PLATE

#### PX05<sub>xyyyz</sub>

xx = 16, 36 (Width)

yy = 10, 12 (Length)

zz = 30, 26 (GA)



### JOIST BLOCKOFF

#### PX06<sub>xyyyz</sub>

xx = 16, 36 (Width)

yy = 10, 14 (Length)

zz = 30, 28, 26 (GA)



### JOIST HEAD

#### PX07<sub>xyyyz</sub>

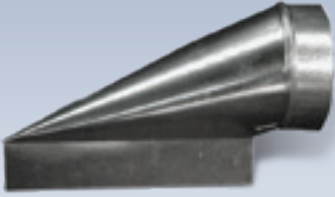
xx = 16, 36 (Width)

yy = 10, 14 (Length)

zz = 30, 28, 26 (GA)

## REGISTER BOOTS

All Register boots can be made with 1" Flange.



### REGISTER BOOT, END

**RB10<sub>xyz</sub> (L571)**

x = 2-12 (Register height)  
yy = 06-14 (Register width)  
z = 4-10 (Round opening)  
Specify L = Left, R = Right



### REGISTER BOOT, STRAIGHT

**RB20<sub>xyz</sub> (L572)**

x = 2-12 (Register height)  
yy = 06-14 (Register width)  
z = 4-10 (Round opening)



### REGISTER BOOT, ELBOW

**RB30<sub>xyz</sub> (L575)**

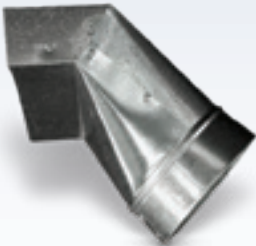
x = 2-12 (Register height)  
yy = 06-14 (Register width)  
z = 4-10 (Round opening)



### BASEMENT BOOT

**RB45<sub>xyz</sub> (PH-1)**

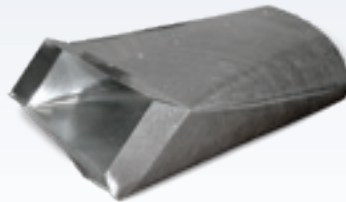
x = 4-8 (Register height)  
yy = 10-14 (Register width)  
z = 4-8 (Round opening)



### REGISTER BOOT, ANGLE

**RB40<sub>xyz</sub> (L577)**

x = 2 - 8 (Register height)  
yy = 10-14 (Register width)  
z = 4-10 (Round opening)



### REGISTER BOOT, POOR BOY

**RB20<sub>xyy</sub>PB**

x = 2-6 (Register height)  
yy = 08-14 (Register width)



### REGISTER BOOT W/INTERGATED UL APPROVED CEILING RADIATION DAMPER & SHEET ROCK FLANGE

**RB10<sub>xyz</sub>FSA End**

**RB20<sub>xyz</sub>FSA Straight**

**RB30<sub>xyz</sub>FSA Elbow**

x = 2-12 (Register height)  
yy = 06-14 (Register width)  
z = 04-10 (Round opening)  
a = 3, 6 (Throat extension)  
Standard 165° Link, 212° available  
Example: 4x12x6 CRD Elbow Boot w/6" extension RB304126FS6



### THRU BOX

**RB92<sub>xxyyzaabb</sub>**

xx = 10 (Register Opening Height)  
yy = 04 (Register Opening Width)  
zz = 12 (Box Depth)  
aa = 04-08 (Collar diameter input)  
bb = 04-08 (Collar diameter output)



### REGISTER BOOT, PERIMETER

**RB43<sub>xxyz</sub> (L580)**

x = 2, 4 (Register height)  
yy = 10-14 (Register width)  
z = 4-10 (Round opening)



### REGISTER PAN

**RB50<sub>xxyy</sub> (516) 5" High**

**RB51<sub>xxyy</sub> (517) 11" High**

x = 04-12 (Register height)  
yy = 10-14 (Register width)



### BOOT RAIL

**RB66<sub>xx</sub>**

xx = 16, 20, 24, 26 (Length)



### BOOT FRAME

**RB70<sub>xxyyzz</sub>**

xx = 04-12 (Register width)  
yy = 06-14 (Register length)  
zz = 16 or 24 (Frame length)  
24" fits both 16" and 24" stud lengths  
Stamped design with rounded edges



### ROUND BOOT FRAME

**RB71<sub>xxzz</sub>**

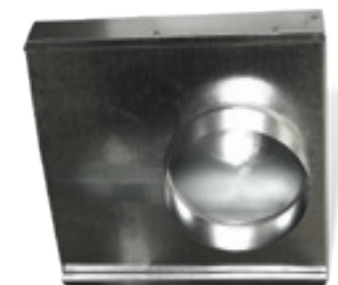
xx = 06-12 (Round opening)  
zz = 24 (Frame length)



### TOE KICK BOX

**RB94<sub>xxyy</sub>**

xx = 02, 03 (Register Height)  
yy = 10, 12 (Register Length)  
Open register side only or register side and bottom.



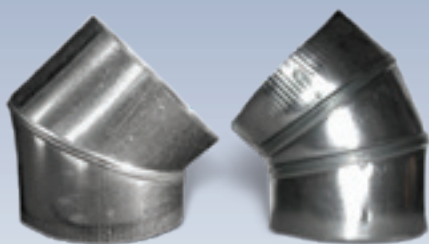
### TOE KICK BOOT W/COLLAR

**RB95<sub>xxyz</sub>**

xx = 2, 3 (Register Height)  
yy = 10, 12 (Register Length)  
zz = 4, 6 (Round collar)  
Toe Kick Boot w/Oval Collar OB95 available, see page 17.



## ADJUSTABLE ELBOWS/ANGLES



### ADJUSTABLE ANGLE

**RX50xxyyz**

xx = 03-36 (Diameter)

yy = 30, 26, 24 or 22 (GA)

z = 3P (3 piece), 2pc. stndrd



### LONG RADIUS ELBOW

**RX54xxyy**

xx = 03-20 (Diameter)

yy = 26 or 24 (GA)



### STRAIGHT BOXED PACKAGING

### ADJUSTABLE ELBOW

**RX53xxyyz**

xx = 03-36 (Diameter)

yy = 30, 28, 26, 24 or 22 (GA)

zz = SB (Straight boxed)

SR (Straight racked)



## SHEET METAL STARTING COLLARS

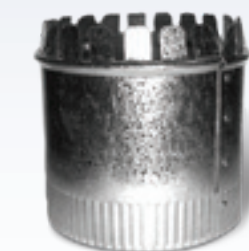


### SHORT STARTING COLLAR

**RX10xx (412) No Crimp**

**RX11xx (413) Crimped**

xx = 04-40 (Diameter)



### LONG STARTING COLLAR

**RX12xx (416)**

**RX13xx (416D) w/Damper**

xx = 04-36 (Diameter)

**Options:** RG (Solid Ring)  
S (Scoop)



### TABLOC LONG STARTING COLLAR

**RX12Txx (416T)**

**RX13Txx (416TD)**

**w/Damper**

xx = 04-20 (Diameter)

Ships nested. Quick tabloc wont release!



### FLEX CONNECTOR

**RX58xxzz**

xx = 03-24 (Diameter)

zz = 30, 26 (GA)

Used to join short pieces of flex.



### LONG ROTH STARTING COLLAR

**RX16xx (413R)**

Medium sized body (4" long)

xx = 03-24 (Diameter)



### CONNECTOR W/WAVEY WASHER

**RX58Rxx**

xx = 03-24 (Diameter)

High-friction couplers allow damper adjustment from register opening.

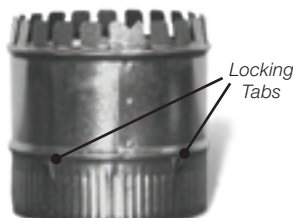


### SHORT STARTING COLLAR WITH SOLID RING

**RX10Rxx (412R) No Crimp**

**RX11Rxx (413R) Crimped**

xx = 04-40 (Diameter)



### LONG CLINCH STARTING COLLAR

**RX14xx (417)**

Tabs help to lock flex on collar

xx = 04-28 (Diameter)



### ROUND END CAP

**RX21xxzz (421) No Crimp**

**RX22xxzz (422) Crimped**

xx = 03-24 (Diameter)

zz = 22, 24 (GA) Blank = 26GA



### ROUND FLEX CONNECTOR

**DX36Rxx**

xx = 03-24 (Diameter)

Provides isolation of furnace and air handler vibration and noise from round duct systems.

## SHEET METAL TAKEOFFS AND SPIN-INS



### SQUARE ADJUSTABLE TAKEOFF

TO10xx (303) No Damper  
TO10Dxx (303D) Damper  
TO10DExx (303DE) Damper  
Ext Kit

xx = 04-24 (Diameter)



### RECTANGULAR NON-ADJ. TAKEOFF

TO20xx (308)  
xx = 04-18 (Diameter)



### ROUND ADJUSTABLE TAKEOFF

TO30xx (325) No Damper  
TO30Dxx (325D) Damper  
TO30DExx (325DE) Damper  
Ext Kit

xx = 04-20 (Round Diameter)

Tabbed opening is 1" larger than round



### ROUND ADJ. TO, HALF-TAB

TO33xx (325H) No Damper  
xx = 05-07 (Diameter)



### SQUARE TOP NON-ADJ. TAKEOFF

TO50xx (563) 0" R  
TO51xx (564) 1" R  
TO52xx (565) 2" R

xx = 04-18 (Diameter)



### SQUARE ADJUSTABLE TO, ROTH

TO16xx (303R) No Damper  
xx = 06-18 (Diameter)



### ROUND SIDE TAKEOFF

TO36xx (326) No Damper  
TO36Dxx (326D) Damper  
xx = 04-20 (Diameter)



### SQUARE SIDE TAKEOFF

TO38xx (328) No Damper  
TO38Dxx (328D) Damper  
TO38DExx (328DE) Damper  
Ext Kit

xx = 04-24 (Diameter)



### DOUBLE TAKEOFF

TO40xx (462) 0" R  
TO41xx (463) 1" R  
TO42xx (464) 2" R

xx = 04-08 (Diameter)



### ROUND-STACK TRANSFORMER

TO80xx (472)  
xx = 04-24 (Diameter)  
Specify Stack opening



### ADJUSTABLE ELBOW TAKEOFF

TO93xx (92SM)  
xx = 04-08 (Diameter)



### CONICAL SPIN-IN TAKEOFF

DX69xx No damper  
DX69Dxx Damper  
DX69DExx Damper Ext Kit  
xx = 04-24 (Diameter)

### ROUND SPIN-IN TAKEOFF

DX70xx (46) No damper  
DX71xx (47) Damper  
DX71Exx (47E) Damper Ext Kit  
xx = 04-18 (Diameter)



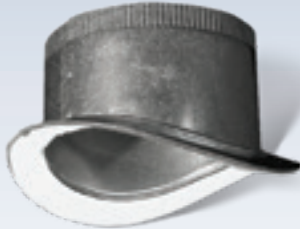
### ROUND SPIN-IN TO W/SCOOP

DX72xx (48) 45° Scoop  
DX73xx (49) 90° Scoop  
DX74xx (50) 45° Scoop & Damper  
DX75xx (51) 90° Scoop & Damper  
xx = 04-18 (Diameter)





## SHEET METAL ADHESIVE TAKEOFFS



### ROUND SADDLE ADHESIVE TO

TA09xx (1231) No damper  
TA09Dxx (1231D) Damper  
TA09DExx (1231DE) Damper Ext Kit  
TA09DSxx (1231DS) Damper & Scoop  
TA09Sxx (1231S) Scoop  
xx = 06-32 (Diameter)



### SQUARE ADJ. ADHESIVE TAKEOFF

TA10xx (1303) No damper  
TA11xx (1303D) Damper  
TA11Exx (1303DE) Damper Ext Kit  
xx = 06-16 (Diameter)



### SQUARE NON-ADJ. ADHESIVE TO

TA20xx (1308) No damper  
TA20Dxx (1308D) Damper  
TA20DExx (1308DE) Damper Ext Kit  
xx = 06-16 (Diameter)



*Save your customers time and money by offering them*

**DAMPER EXTENSION KITS already installed on ANY adhesive takeoff.**



### ROUND ADJ. ADHESIVE TAKEOFF

TA30xx (1325) No damper  
TA30Dxx (1325D) Damper  
TA30DExx (1325DE) Damper Ext Kit  
xx = 04-12 (Diameter)



### SQUARE CONICAL ADHESIVE TO

TA38xx (1328) No damper  
TA38Dxx (1328D) Damper  
TA38DExx (1328DE) Damper Ext Kit  
xx = 04-26 (Diameter)



### SQUARE ADHESIVE TAKEOFF

TA39xx (1329) No damper  
TA39Dxx (1329D) Damper  
TA39DExx (1329DE) Damper Ext Kit  
xx = 04-24 (Diameter)



### TOP SQ. ADHESIVE TAKEOFF

TA51xx (1564) 1"R No damper  
TA51Dxx (1564D) 1"R Damper  
TA52xx (1565) 2"R No damper  
TA52Dxx (1565D) 2"R Damper  
xx = 04-16 (Diameter)

Lukjan can manufacture any adhesive fitting using Anti-Microbial (AglON) coated steel. Call for special quote



### ROUND ADHESIVE TAKEOFF

TA40xx (1329R) No damper  
TA40Dxx (1329RD) Damper  
TA40DExx (1329RDE) Damper Ext Kit  
TA40DSxx (1329RDS) Damper & Scoop  
TA40Sxx (1329RS) Scoop  
TA40Fxx (1329RF) Flange  
xx = 06-32 (Diameter)



### HIGH EFFICIENCY TAKEOFF

TA57xx (1573) No damper  
TA57Dxx (1573D) Damper  
TA57DExx (1573DE) Damper Ext Kit  
xx = 04-26 (Diameter)

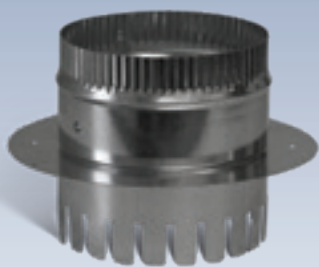


### ROUND CONICAL ADHESIVE TO

TA60xx (1330) No damper  
TA60Dxx (1330D) Damper  
TA60DExx (1330DE) Damper Ext Kit  
TA60DSxx (1330DS) Damper & Scoop  
xx = 04-24 (Diameter)

**SUBMITTALS for any Adhesive Takeoff available upon request**

## DUCTBOARD TAKEOFFS AND FITTINGS



### DUCTBOARD COLLAR-SOLID RING

**DX76xx (52)**

xx = 04-24

**Options:** L = 1.5" tabs R6  
L2 = 2" Tabs R8



### TABLOC DUCTBOARD COLLAR

**DX77xx (52T)**

xx = 04-24

Standard supports both R6 and R8



### SQUARE ADJ. DUCTBOARD TAKEOFF

**TO14xx (303DB)**

**TO14Dxx w/Damper**

xx = 04-16

Standard supports R4

**Options:** U (Universal; R6 and R8)



### DUCTBOARD COLLAR W/DAMPER

**DX38xx (53)**

xx = 04-24

**Options:** L = 1.5" tabs R6  
L2 = 2" Tabs R8  
S = Scoop



### TABLOC DB COLLAR W/DAMPER

**DX39xx (53T)**

xx = 04-18

Standard supports both R6 & R8



### SQUARE NON-ADJ. DB TAKEOFF

**TO18xx (308DB)**

**TO18Dxx w/Damper**

xx = 04-12

Standard supports R4

**Options:** U (Universal; R6 and R8)



### DB TWIST-IN COLLAR

**DX60xx (40)**

**DX61xx (41) w/Damper**

xx = 04-20



### DB TWIST-IN COLLAR W/SCOOP

**DX62xx (42) 45° Scoop**

**DX63xx (43) 90° Scoop**

**DX64xx (44) 45° Scoop & Damper**

**DX65xx (45) 90° Scoop & Damper**

xx = 04-20



### NON-ADJ. DB TAKEOFF W/1" RISE

**TO54xx (564DB)**

**TO54Dxx w/Damper**

xx = 06-14

Standard supports R4

**Options:** U (Universal; R6 and R8)  
L2 (R8 only)



### ADJ. ELBOW DB TAKEOFF

**TO94xx (92DB)**

**TO94Dxx w/Damper**

xx = 05-16



### ADJ. ANGLE DB TAKEOFF

**TO95xx**

**TO95Dxx w/Damper**

xx = 06-16



### ROUND ADJ. DB TAKEOFF

**TO31xx (325DB)**

xx = 05-08



## DUCTBOARD TAKEOFFS AND FITTINGS (CONT.)



### SQUARE SIDE DB TAKEOFF

TO39xx (328DB)

xx = 05-12



### DOUBLE DB TAKEOFF

TO45xx (464DB)

xx = 06, 07, 08



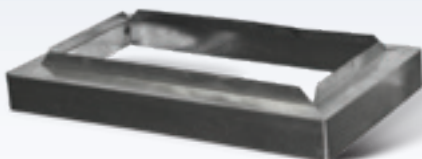
### DB RECTANGULAR STARTING COLLAR

DX35xxyy (520DB)

xx = 10, 12

yy = 20, 24

Specify R4, R6 or R8 Ductboard



### DB METAL BOOT FACE

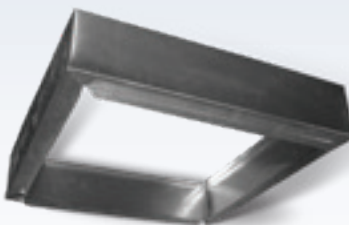
Used in making DB ceiling boxes

CA75xxyyz

xx = 04, 06, 08 (Register Width)

yy = 8, 10, 12, 14 (Register Length)

z = 1, 2 (1 = R4, 2 = R8)



### DUCTBOARD COLLAR BOX

For making DB Supply Air Boxes

DX83xxyyz

xx = 12-20 (Cold Air Vent Width)

yy = 12-24 (Cold Air Vent Length)

z = 3 (Standard Height)



### ADJUSTABLE DUCTBOARD COLLAR

Adjusts for R4, R6, R8 or even Sheet Metal

## CEILING BOXES AND BOOTS



### CEILING BOOT SIDE

RB60xxyyzz

xx = 06-20 (Register Length)

yy = 06-14 (Register Width)

zz = 04-12 (Diameter out)

**Example:** 10x6x6 = RB60100606



### CEILING BOX SIDE

RB61xxyyzz

xx = 06-24 (Register Length)

yy = 06-24 (Register Width)

zz = 04-20 (Diameter out)

**Options:** F = Flange

FS = CRD Installed



### CEILING BOX TOP

RB62xxyyzz

xx = 06-24 (Register Length)

yy = 06-24 (Register Width)

zz = 04-20 (Diameter out)

**Options:** F = Flange

FS = CRD Installed



### CEILING BOX ANGLE

RB65xxyyzz

xx = 08-14 (Length)

yy = 06-14 (Width)

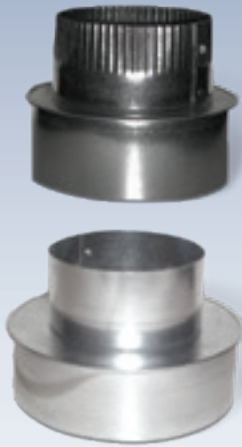
zz = 04-10 (Diameter out)

**Options:** F = Flange

Specify Collar Angled or Collar Straight

*For insulated ceiling boxes, see page 23*

## REDUCERS/INCREASERS



### CAP REDUCER

**RX23<sub>xyy</sub> (450) w/Crimp**  
**RX24<sub>xyy</sub> (451) No Crimp**  
 xx = 04-18 (Larger Diameter)  
 yy = 03-16 (Smaller Diameter)  
 Crimp on smaller diameter



### CAP INCREASER

**RX25<sub>xyy</sub> (452) w/Crimp**  
 xx = 04-18 (Larger Diameter)  
 yy = 03-16 (Smaller Diameter)  
 Crimp on larger diameter



### TAPERED REDUCER

**RX40<sub>xyyzz</sub> (430) w/Crimp**  
**RX41<sub>xyyzz</sub> (431) No Crimp**  
 xx = 04-24 (Larger Diameter)  
 yy = 03-22 (Smaller Diameter)  
 zz = 30, 24, 22 (GA) Blank = 26GA  
 Crimp on smaller diameter



### TAPERED INCREASER

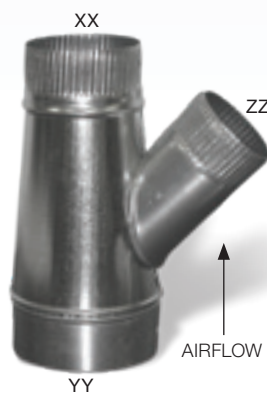
**RX43<sub>xyyzz</sub> (432) w/Crimp**  
 xx = 04-16 (Larger Diameter)  
 yy = 03-12 (Smaller Diameter)  
 zz = 30, 24, 22 (GA) Blank = 26GA  
 Crimp on larger diameter

## TEES AND WYES



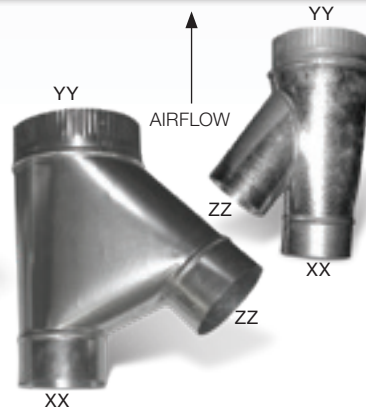
### FLARED TEES

**RX70<sub>xyyzz</sub> (352)**  
 xx = 03-36 (Air entry diameter)  
 yy = 03-36 (Air exit diameter crimped)  
 zz = 03-36 (Air exit diameter)  
 RX70xx = All branches equal diameter  
 Standard 26GA



### REDUCING WYE

**RX79<sub>xyyzz</sub> (228)**  
 xx = 03-18 (Air exit diamter, crimped)  
 yy = 04-20 (Air entry diameter)  
 zz = 03-18 (Branch diameter, crimped)



### FLUE WYE

**RX80<sub>xyyzz</sub> (229)**  
 xx = 03-18 (Air Entry, furnace side)  
 yy = 04-20 (Air Eixt, flue side, crimped)  
 zz = 03-18 (Air Entry, Branch diameter)



### SWIVEL TEES

**RX71<sub>xyyzz</sub>**  
 xx = 04-06 (Lower branch diameter)  
 yy = 04-07 (Body diameter)  
 zz = 03-06 (Upper branch diameter)



### OLD STYLE TEES

**RX75<sub>xxzz</sub>**  
 xx = 04-08  
 zz = Blank for 26GA, 24 for 24GA



### BRANCH WYE

**RX81<sub>xyyzz</sub> (330)**  
 xx = 03-20 (Air Entry diameter)  
 yy = 03-18 (Branch 1, crimped)  
 zz = 03-18 (Branch 2, crimped)  
 Bullhead is Branch 1 = Branch 2



### BRANCH WYE, SINGLE ADJ.

**RX82<sub>xyyzz</sub> (332)**  
 xx = 03-14 (Air Entry diameter)  
 yy = 03-12 (Branch 1, crimped)  
 zz = 03-12 (Adjustable Branch 2, crimped)

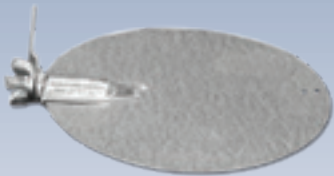


### BRANCH WYE, DOUBLE ADJ.

**RX83<sub>xyyzz</sub> (336)**  
 xx = 03-14 (Air Entry diameter)  
 yy = 03-12 (Adjustable Branch 1, crimped)  
 zz = 03-12 (Adjustable Branch 2, crimped)

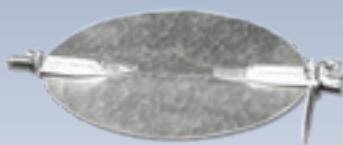


## DAMPERS AND DAMPER HARDWARE



### DAMPER W/ 1 HARDWARE RX31xx (10)

xx = 03-12 (Diameter)  
Damper blade, Spring loaded damper clip, washer, wing nut, handle all 5/16"



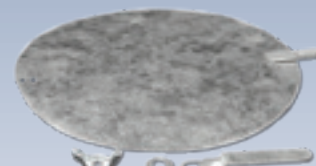
### DAMPER W/ 2 HARDWARE RX32xx (10)

xx = 04-36 (Diameter)  
Damper blade, 2 Spring loaded damper clips, 2 washers, 2 wing nuts and 2 handles all 5/16"



### ECONOMY DAMPER W/ 1 HRDWR ASSEMBLED RX35xx (11)

xx = 04-12 (Diameter)  
Damper blade, Spade, washer, wing nut and handle all 1/4"



### ECONOMY DAMPER W/ 1 HRDWR UNASSEMBLED RX36xx (11)

xx = 04-12 (Diameter)  
Damper blade, Spade, washer, wing nut and handle all 1/4"



### ECONOMY DAMPER W/ 2 HRDWR ASSEMBLED RX37xx (11)

xx = 04-18 (Diameter)  
Damper blade, 2 Spades, 2 washers, 2 wing nuts and 2 handles all 1/4"



### ECONOMY DAMPER W/ 2 HRDWR UNASSMBLD RX38xx (11)

xx = 04-14 (Diameter)  
Damper blade, 2 Spades, 2 washers, 2 wing nuts and 2 handles all 1/4"



### DAMPER TUBES

#### RX39xxyy RX39DExxyy

xx = 04-18 (Diameter)  
yy = 06-20 (Height, even only)  
Damper included  
Double ECONO hardware for damper sizes up to 9", SLDC and PDC sizes ≥10"



### DAMPER HARDWARE KITS

#### HD01xx

xx = 01 (SLDC, H, W, WN)  
02 (SLDC, H, W, WN, TDC)  
03 (SLDC, H, W, WN, PDC)  
04 (2-SLDC, H, W, WN)



### DAMPER HANDLES

#### HD04xx

xx = 01 (Regular)  
xx = 02 (Double, 1/4" and 5/16")



### DAMPER WASHERS

#### HD02xx

xx = 01 (Flat 5/16")  
xx = 01A (Flat 1/4")



### DAMPER WINGNUTS

#### HD03xx

xx = 01 (Stamped 5/16")  
xx = 01A (Stamped 1/4")



### DAMPER CLIPS

#### HD05xx

xx = 01 (Threaded; TDC)  
xx = 02 (Plain; PDC)  
xx = 03 (Spring-Loaded; SLDC)

### BUTTERFLY DAMPER

#### RX59xx

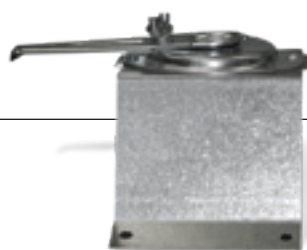
xx = 04 - 16 (Diameter)



### DAMPER DISK BLANKS

#### HD06xx

xx = 03-36 (Diameter)



### DAMPER EXTENSION KITS

#### RX30xxx

xxx = 01 (1" High Standoff)  
015 (1.5" High Standoff)  
02 (2" Standoff, 5/16" Shaft)  
025 (2" Standoff, 1/4" Shaft)

Used to extend damper handles when insulating fittings



**SLDC** = Spring Loaded Damper Clip  
**TDC** = Threaded Damper Clip  
**PDC** = Plain Damper Clip  
**H** = Handle  
**W** = Washer  
**WN** = Wing Nut

# OVAL PIPE AND FITTINGS

## OVAL PIPE

### OP01xxyy

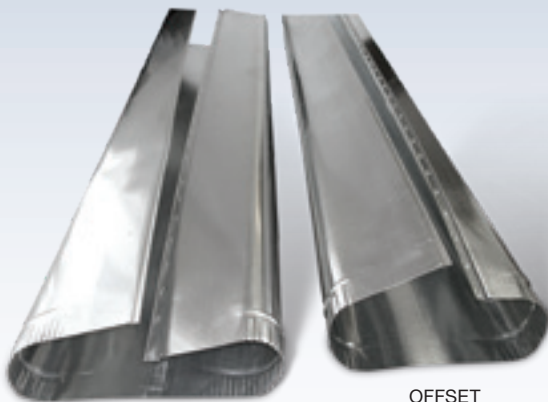
xx = 05, 06, 07, 08, 10 (Oval dimension)

yy = 060, 100, 112, 113, 120 (Length)

Other lengths available. Standard 30GA

center seam, buttonlock.

Optional offset seam, 26GA.



CENTER

OFFSET

BRANCH DUCT (IN)	MAJOR (IN)	MINOR (IN)	CIRCUMF. (IN)	X-SEC. AREA (SQ. IN.)	CAPACITY (CFM) .10 S.P.	EQUIV. ROUND (IN)
5 ROUND			15.7	19.6	68	
6 ROUND			18.8	28.3	108	
7 ROUND			22.0	38.5	160	
8 ROUND			25.2	50.3	230	
5 OVAL	6.0	3.25	15.7	15.3	53	4.6
6 OVAL	7.6	3.25	18.8	19.3	78	5.2
7 OVAL	9.1	3.25	22.0	23.3	92	5.7
8 OVAL	10.7	3.25	25.2	27.3	118	6.1
10 OVAL	13.8	3.25	31.4	35.3	148	6.8
3-1/4X10 STACK			26.5	32.5	108	6.0
3-1/4X12 STACK			30.5	39.0	134	6.5

Lukjan offers a complete line of Oval Pipe and Fittings 5" thru 8"

Oval Pipe lengths standard at 60" and 100". Other lengths available.

### OVAL PIPE RACK QTY

#### ANY LENGTH

6	400
7	320
8	300



### OVAL VERTICAL ANGLE

#### OX52xx

xx = 5, 6, 7, 8



### OVAL VERTICAL ELBOW

#### OX54xx

xx = 5, 6, 7, 8



### OVAL HORIZONTAL ANGLE

#### OX51xx

xx = 5, 6, 7, 8



### OVAL HORIZONTAL ELBOW

#### OX53xx

xx = 5, 6, 7, 8



### OVAL TO ROUND BOOT, END

#### OB71xxyy (71)

xx = 5, 6, 7, 8 (Oval dimension)

yy = 5, 6, 7, 8 (Round dimension)

For Round = Oval, leave yy blank

Options: CO = Crimp oval end  
CR = Crimp round end



### OVAL TO ROUND BOOT, STRAIGHT

#### OB72xxyy (72)

xx = 5, 6, 7, 8 (Oval dimension)

yy = 5, 6, 7, 8 (Round dimension)

For Round = Oval, leave yy blank

Options: CO = Crimp oval end  
CR = Crimp round end



### OVAL TO ROUND BOOT, ELBOW

#### OB75xxyy (75)

xx = 5, 6, 7, 8 (Oval dimension)

yy = 5, 6, 7, 8 (Round dimension)

For Round = Oval, leave yy blank

Options: CO = Crimp oval end  
CR = Crimp round end



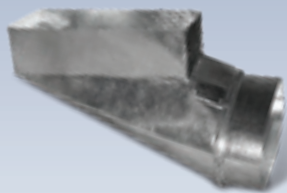
### OVAL TO OVAL REVERSE ELBOW

#### OB78xx (78)

xx = 5, 6, 7, 8 (Oval dimension)



## OVAL PIPE AND FITTINGS (CONT.)



### OVAL BOOT, END

**OB10xyyz (L571O)**

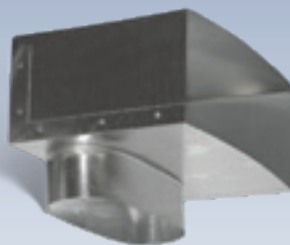
x = 2, 3, 4, 6 (Register height)  
yy = 10, 12, 14 (Register width)  
z = 5, 6, 7, 8 (Oval opening)



### OVAL BOOT, STRAIGHT

**OB20xyyz (L572O)**

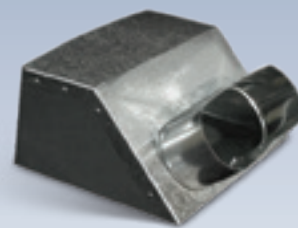
x = 2, 3, 4, 6 (Register height)  
yy = 10, 12, 14 (Register width)  
z = 5, 6, 7, 8 (Oval opening)



### OVAL BOOT, ELBOW

**OB30xyyz (L575O)**

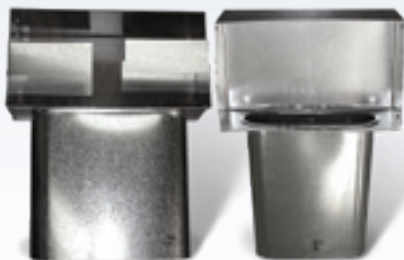
x = 2, 3, 4, 6 (Register height)  
yy = 10, 12, 14 (Register width)  
z = 5, 6, 7, 8 (Oval opening)



### OVAL BOOT, ANGLE

**OB40xyyz (L577O)**

x = 2, 3, 4, 6 (Register height)  
yy = 10, 12, 14 (Register width)  
z = 5, 6, 7, 8 (Oval opening)



### OVAL STACKHEAD

**OX10xyyz**

xx = 4, 6, 8, 10 (Register height)  
yy = 8, 10, 12, 14 (Register width)  
z = 5, 6, 7, 8 (Oval opening)



### OVAL STACKHEAD, DOUBLE

**OX11xyyz**

xx = 4, 6, 8, 10 (Register height)  
yy = 8, 10, 12, 14 (Register width)  
z = 5, 6, 7, 8 (Oval opening)



### OVAL STACKHEAD, SPLIT

**OX12xyyz**

xx = 4, 6 (Register height)  
yy = 10, 12 (Register width)  
z = 6, 7 (Oval opening)



### OVAL CAP

**OX21xx (No Crimp)**

xx = 5, 6, 7, 8



### OVAL START COLLAR

**OX63xx (413O) Crimp**

**OX64xx (412O) No Crimp**

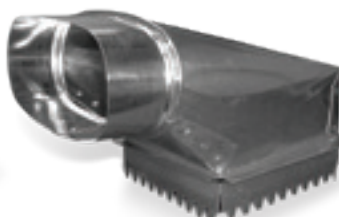
xx = 5, 6, 7, 8



### OVAL TOP TAKEOFF

**OX60xx (564O)**

xx = 5, 6, 7, 8



### OVAL TOP TAKEOFF, DUCTBOARD

**OX62xx (564ODB)**

xx = 5, 6, 7, 8



### OVAL ADHESIVE TAKEOFF

**OX40xx (1329OV)**

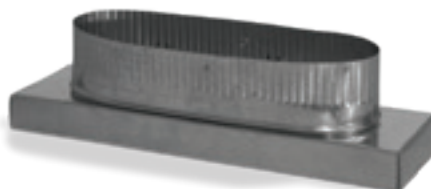
xx = 5, 6, 7, 8



### OVAL DUCTBOARD START COLLAR

**OX76xx (52Oval)**

xx = 5, 6, 7, 8



### OVAL ADAPTER

**OX70xyyz**

xx = 2, 3, 4 (Stack height)  
yy = 10, 12, 14 (Stack width)  
z = 6, 7 (Oval opening)



### OVAL FIRE STOP

**OX90xx**

xx = 5, 6, 7, 8

# WALL STACK AND STACK FITTINGS

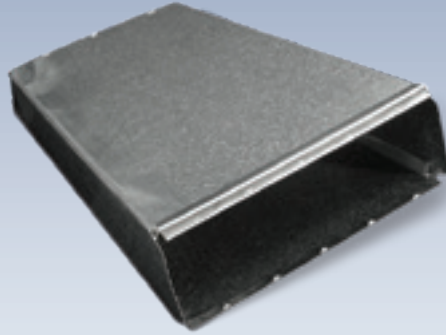
## WALLSTACK, 2PC. SNAP LOCK

**SK01xyyzzz**

x = 2, 3 (Stack depth), 2 = 2.25, 3 = 3.25

yy = 08, 10, 12, 14 (Stack width)

z = 012-115 (Stack length)



## STACK BOOT, END

**SB10xyyz**

x = 2, 3 (Stack depth)

yy = 08, 10, 12, 14 (Stack width)

z = 4, 5, 6, 7, 8 (Round opening)

Standard with Stack Clips



## STACK BOOT, STRAIGHT

**SB20xyyz**

x = 2, 3 (Stack depth)

yy = 08, 10, 12, 14 (Stack width)

z = 4, 5, 6, 7, 8 (Round opening)

Standard with Stack Clips



## STACK BOOT, ELBOW

**SB30xyyz**

x = 2, 3 (Stack depth)

yy = 08, 10, 12, 14 (Stack width)

z = 4, 5, 6, 7, 8 (Round opening)

Standard with Stack Clips



## STACK BOOT, ANGLE

**SB40xyyz**

x = 3 (Stack depth)

yy = 10, 12, 14 (Stack width)

z = 6, 7 (Round opening)

Standard with Stack Clips



## WALLSTACK VERTICAL ANGLE

**SX23xyyy (314)**

xx = 02, 03 (Stack depth)

yy = 08, 10, 12, 14 (Stack width)

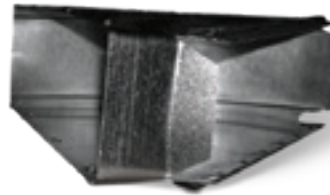


## WALLSTACK VERTICAL ELBOW

**SX21xyyy (307)**

xx = 02, 03 (Stack depth)

yy = 08, 10, 12, 14 (Stack width)

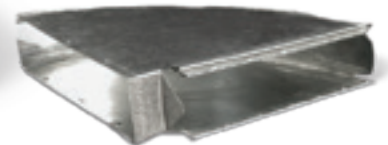


## WALLSTACK HORIZONTAL ANGLE

**SX27xyyy (532)**

xx = 02, 03 (Stack depth)

yy = 08, 10, 12, 14 (Stack width)



## WALLSTACK HORIZONTAL ELBOW

**SX25xyyy (525)**

xx = 02, 03 (Stack depth)

yy = 08, 10, 12, 14 (Stack width)



## WALLSTACK STARTING COLLAR

**SX33xyyy (520)**

xx = 02, 03 (Stack depth)

yy = 10, 12, 14 (Stack width)

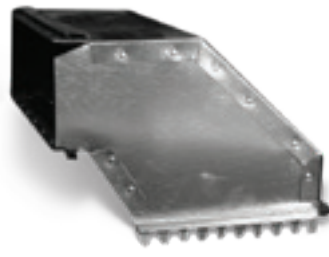


## WALLSTACK SIDE TAKEOFF

**SX42xyy (364)**

x = 3 (Stack depth)

yy = 10, 12, 14 (Stack width)



## WALLSTACK TOP TAKEOFF

**SX41xyy (362)**

x = 2, 3 (Stack depth)

yy = 10, 12, 14 (Stack width)



## WALLSTACK REVERSE ELBOW

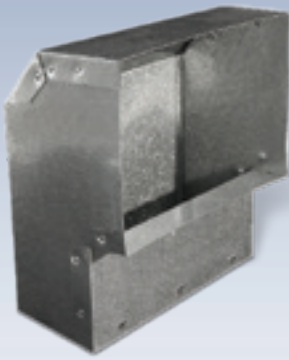
**SX24xyyy (524)**

xx = 02, 03 (Stack depth)

yy = 08, 10, 12, 14 (Stack width)



## WALL STACK AND STACK FITTINGS (CONT.)



### STACKHEAD, SHORT SX70xyyabb (302)

x = 2, 3 (Stack depth)  
yy = 10, 12, 14 (Stack width)  
a = 4, 6, 8 (Register width)  
bb = 10, 12, 14 (Register height)



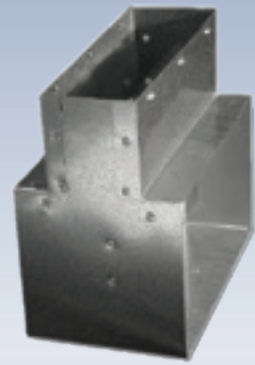
### STACKHEAD, LONG W/EARS SX71xyyabb (309)

x = 2, 3 (Stack depth)  
yy = 10, 12, 14 (Stack width)  
a = 4, 6, 8 (Register width)  
bb = 10, 12, 14 (Register height)



### STACKHEAD, LONG SX72xyyabb (310)

x = 2, 3 (Stack depth)  
yy = 10, 12, 14 (Stack width)  
a = 4, 6, 8 (Register width)  
bb = 10, 12, 14 (Register height)



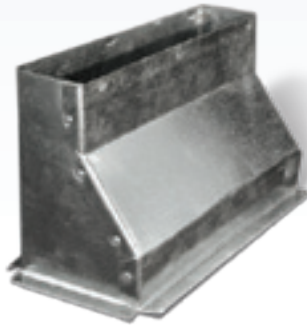
### STACKHEAD, DOUBLE SX73xyyabb (311)

x = 2, 3 (Stack depth)  
yy = 10, 12, 14 (Stack width)  
a = 4, 6, 8 (Register width)  
bb = 10, 12, 14 (Register height)



### STACKHEAD, OUT OF WALL SX74xyyabb (313)

x = 2, 3 (Stack depth)  
yy = 10, 12, 14 (Stack width)  
a = 4, 6 (Register width)  
bb = 10, 12, 14 (Register height)



### STACKHEAD SX75xyyabb (315)

x = 2, 3 (Stack depth)  
yy = 10, 12, 14 (Stack width)  
a = 4, 6 (Register width)



### STACK ADAPTER, STRAIGHT SX80xyyabb (601)

x = 3 (Stack A depth)  
yy = 10, 12, 14 (Stack A width)  
a = 2 (Stack B depth)  
bb = 10, 12, 14 (Stack B width)



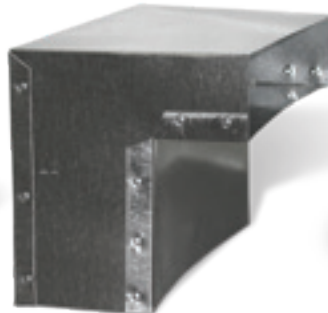
### STACK ADAPTER, ELBOW SX81xyyabb (602)

x = 3 (Stack A depth)  
yy = 10, 12, 14 (Stack A width)  
a = 2, 4, 6 (Stack B depth)  
bb = 10, 12, 14 (Stack B width)



### OFFSET STACK SX94xyyabb

x = 2, 3 (Stack A depth)  
yy = 10, 12, 14 (Stack A width)  
a = 2, 3, 4, 6 (Stack B depth)  
bb = 10, 12, 14 (Stack B width)  
3" Standard Offset, 9" long



### JIMMY BOOT SX96xyyabb



### WALLSTACK CONNECTOR SX35xyy (604)

x = 2, 3 (Stack depth)  
yy = 10, 12, 14 (Stack width)



### WALLSTACK END CAP SX44xyy (512)

x = 2, 3 (Stack depth)  
yy = 10, 12, 14 (Stack width)

## GALVANIZED SPIRAL PIPE

### GP01xxyy

xx = 03-36 (Pipe diameter)

yy = 22, 24, 26 (GA)

Order Qty in feet. 10' lengths standard.  
\$2 cut charge applies for each non-standard size.

**Options:** Smooth or Raised

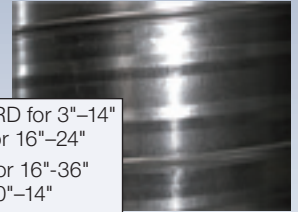
Paint Grip Spiral and Fittings available for 10% Additional.



Smooth



Raised



SMOOTH surface STANDARD for 3"-14"  
Smooth surface also avail for 16"-24"  
RAISED bead STANDARD for 16"-36"  
Raised bead also avail for 10"-14"  
Please specify when ordering

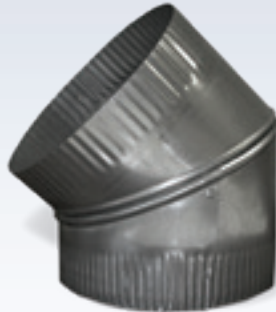


## GALVANIZED SPIRAL ELBOWS

### RX53xxyyGS

xx = 03-36 (Diameter)

yy = 22, 24, 26 (GA)



## GALVANIZED SPIRAL ANGLES

### RX50xxyyGS

xx = 03-36 (Diameter)

yy = 22, 24, 26 (GA)



## SPIRAL CONNECTOR

### RX58xxyy

### RX58Dxxyy (w/Damper)

xx = 04-36 (Diameter)

yy = 26, 24, 22 (GA)

**Options:** W (Wavey washer: damper only)



## SHOE TAP

### RX66xxyy

xx = 03-16 (Diameter)

yy = 26, 24 (GA)



## GALVANIZED SPIRAL REDUCER

### RX44xxyyzz (433)

xx = 04-36 (Larger diameter)

yy = 03-30 (Smaller diameter)

zz = 22, 24, 26 (GA)



## SPIRAL ECCENTRIC REDUCER

Flat one edge, 10% Additional



## SPIRAL REGISTER SADDLE W/ADHESIVE

### RX64xxyyzz

Same as RX65



## SPIRAL REGISTER SADDLE

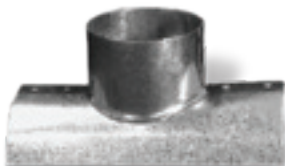
### RX65xxyyzz

xx = 03-20 (Register Height)

yy = 10-30 (Register Width)

zz = 22, 24 (GA), Blank for 26GA

**Options:** FI (1" Flange In)



## SPIRAL SADDLE FLUE W/90° TO

### RX61xxyyzz (231)

xx = 03-20 (Takeoff Diameter)

yy = 22, 24, 26 (GA)

zz = 10-20 (Pipe diameter to fit)

**Example:** 14" 24GA 90 Takeoff to fit 18" pipe



## SPIRAL SADDLE FLUE W/45° TO

### RX60xxyy (230)

xx = 04-36 (Diameter)

yy = 24, 22 (GA) Blank = 26GA



## GALVANIZED SPIRAL END CAPS

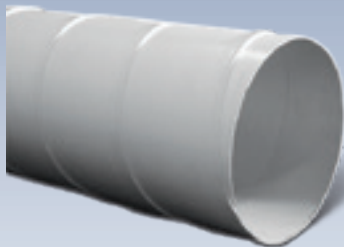
### RX22xxyy (422) Crimped

xx = 03-24 (Diameter)

yy = 24, 22 (GA) Blank = 26GA



## PVC SPIRAL AND FITTINGS



**ALL PVC PRODUCTS**  
1 mil coating inside  
4 mil coating outside



### PVC SPIRAL PIPE

#### VP01xxyy

xx = 04-36 (Diameter)

yy = 02-20 (Length in FEET)

**Options:** Smooth or Raised Seam

### PVC ANGLE

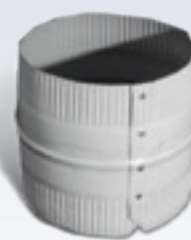
#### VX50xx

x = 04-36 (Diameter)

### PVC ELBOW

#### VX53xx

x = 04-36 (Diameter)



### PVC STARTING COLLAR

#### VX11xx (416P)

x = 04-36 (Diameter)

### PVC ECCENTRIC REDUCER

#### VX44xxyy

xx = 06-28 (Larger Diameter)

yy = 04-26

Tapered reducer optional

### PVC END CAP

#### VX20xx (422P)

x = 03-36 (Diameter)

### PVC CONNECTOR

#### VX58xx

x = 04-36 (Diameter)



### PVC REGISTER BOOT, END

#### VB10xyyz (L571P)

x = 2-6 (Register height)

yy = 06-14 (Register width)

z = 4-10 (Round opening)

Specify L = Left, R = Right

### PVC REGISTER BOOT, STRAIGHT

#### VB20xyyz (L572P)

x = 2-6 (Register height)

yy = 06-14 (Register width)

z = 4-10 (Round opening)

### PVC REGISTER BOOT, ELBOW

#### VB30xyyz (L575P)

x = 2-6 (Register height)

yy = 06-14 (Register width)

z = 4-10 (Round opening)

### PVC PERIMETER BOOT

#### VB70xyyz

x = 2-6 (Register height)

yy = 06-14 (Register width)

z = 4-10 (Round opening)



### PVC REGISTER SADDLE

#### VX61xyy

x = 2-08 (Register height)

yy = 06-24 (Register width)

### PVC 45° SADDLE

#### VX62xx (230P)

xx = 04-16 (Takeoff Diameter)

### PVC 90° SADDLE

#### VX63xx (231P)

xx = 04-36 (Takeoff Diameter)

### PVC SHOE TAP

#### VX66xx

xx = 06-12 (Takeoff Diameter)

### PVC TEE

#### VX70xx (352P)

xx = 06-26



### PVC FLUE WYE

#### VX80xx (229P)

xx = 06-36



### PVC TOUCH-UP PAINT

#### VX9001

12 oz. Can, 6/box

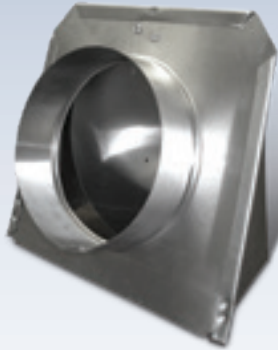
## DRYER/VENTILATION PRODUCTS

### ALUMINUM DRYER VENTS

**AX74xx**

xx = 03-12

Standard with air flap

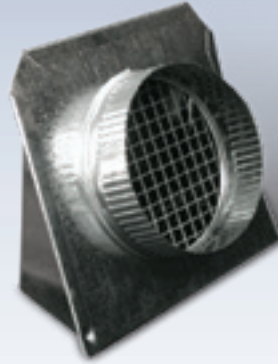


### ALUMINUM FRESH AIR INTAKE

**AX64xx**

xx = 04-14

Standard with screen



### GALVANIZED DRYER VENTS

**EX74xx**

xx = 03-10

Standard with air flap

### GALV. FRESH AIR INTAKES

**CA64xx**

**CA64Dxx w/Damper**

xx = 04-16

Standard with screen

### DRYER WALL BOXES

**EX30xx**

xx = 35 (3.5" deep, oval opening)

425 (4.25" deep, round opening)

y = U (Upward)

D (Downward)

## HANGER/SUPPORT PRODUCTS

### DUCT HANGER "Z" STYLE

**DX14xx**

xx = 08, 09, 10 (Length)



### STRAPPING COIL

**DX16xyyyzz**

x = 1 or 2 (Width inches)

yyy = 100 (Length feet)

zz = 24 (GA) Blank for 26GA

**Options:** P (Perforated)



### ADJUSTABLE DUCT HANGERS

**DX20xx**

xx = 16, 24 (Length adjustable to)

**Options:** P (Prong/Spear Tip)

T (Tab/Screw Tip)



### "U" CHANNELS

**DX08xyyyzz**

xx = (Side 1 dimension)

yy = (Side 2 dimension)

zz = 036, 060, 096 (U Chnl Length)

Standard 26GA



### PIPE HANGER

**DX14xx**

xx = 14, 16, 24 (Length)



### DUCT HANGER STRIPS

**DX15xyyyzz**

x = 1, 1.5, 3 (Width inches)

yyy = 012-120 (Length inches)

zz = 18, 22, 24, 26, 30 (GA)

No holes standard



### SUPPORT BRACKETS

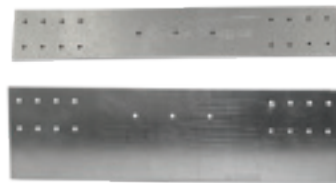
**DX17xyyyzzhh**

xx = 015, 03, 05 (1.5", 3", 5" Width)

yy = 18, 28 (Length inches)

zz = 16, 18 (GA)

hh = 9, 16, 19 (# holes)



### DUCT HANGER "L" STYLE

**DX19xyyyzz**

x = 1 (Width inches)

yyy = 008-018 (Length inches)

zz = 18 (GA)



### BRIDGE SPEARS

**RX95xyy**

x = 1 (Width)

yy = 16, 20 (Length)

Standard 18GA



### ANGLE STRIPS

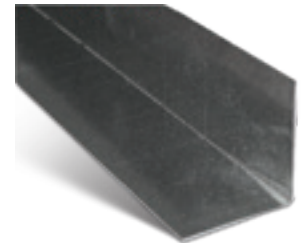
**DX18xyyyzzaa**

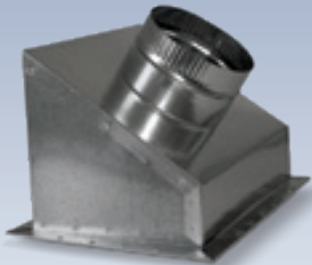
xx = (Side 1 dimension)

yy = (Side 2 dimension)

zzz = 018-0120 (Angle Length)

aa = 26, 28, 24, 22, 18 (GA)





## INSULATED CEILING BOX – ANGLE

### RB65xyyyzza

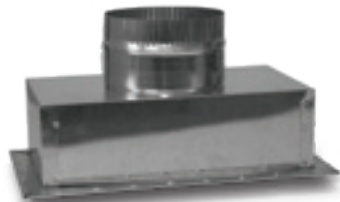
xx = 08-14 (Register Length)  
yy = 06-14 (Register Width)  
zz = 04-10 (Diameter out)  
a = R4, R6, R8 (Insulation factor)  
**Options:** F = Flange, FS=CRD Installed  
Specify collar angled or collar straight.



## INSULATED CEILING BOX – SIDE

### RB61xyyyzza

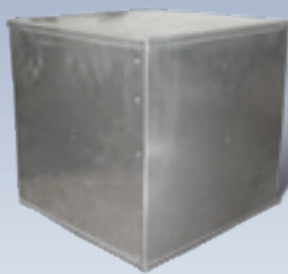
xx = 06-24 (Register Length)  
yy = 06-24 (Register Width)  
zz = 04-20 (Diameter out)  
a = R4, R6, R8 (Insulation factor)  
**Options:** F = Flange, FS=CRD Installed



## INSULATED CEILING BOX – TOP

### RB62xyyyzza

xx = 06-24 (Register Length)  
yy = 06-24 (Register Width)  
zz = 04-20 (Diameter out)  
a = R4, R6, R8 (Insulation factor)  
**Options:** F = Flange, FS = CRD Installed



## INSULATED BOXES

### DX46xyyyzza

xx = 12-30 (Width)  
yy = 12-30 (Length)  
zz = 12-30 (Height)  
a = R4, R6, R8 (Insulation factor)



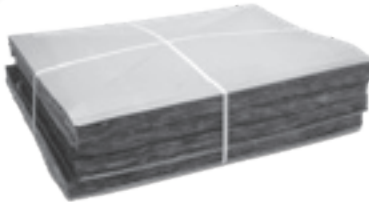
## INSULATED RECTANGULAR DUCT

### DT01xyyyzza 26GA

### DT02xyyyzza 28GA

### DT03xyyyzza 24GA

xx = 08-30 (Slip dimension)  
yy = 08, 10, 12 (Drive dimension)  
zz = 33, 36, 48, 60, 96 (Length)  
a = R4, R6, R8 (Insulation factor)



## INSULATED PLENUMS (NO TOP)

### PL11xyyyzza

xx = 10-28 (Plenum Width)  
yy = 12-30 (Plenum Depth)  
zz = 12-60 (Plenum Height)  
a = R4, R6, R8 (Insulation factor)

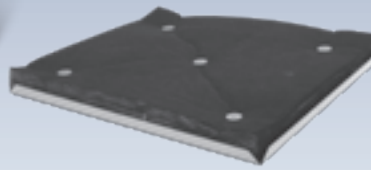
**Note:** All dimensions are outside dimensions and do NOT consider insulation thickness.

Standard 4 sides, x-broke. Top (PX18) ordered separately.

**Options:** Two Piece Designs, Flange In/Out, Hem, R4, R6, R8 Insulation

**Example:** 16 x 20.5 x 48 R6 Insul Plenum  
PL11162048R6A

All insulated products, except ceiling boxes, measure OUTSIDE metal dimensions and DO NOT consider insulation thickness.  
**Example:** 16x20x48 R8 insulated plenum has a 12x16 air channel.



## INSULATED PLENUM TOPS

### PX18xyyyza

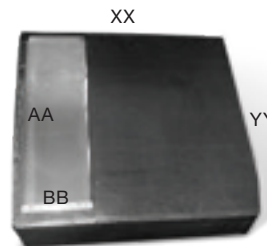
xx = 10-28 (Plenum Width)  
yy = 12-36 (Plenum Length)  
a = R4, R6, R8 (Insulation factor)



## INSULATED FURNACE BOX

### CA50xyyyzza

xx = 14-40 (Box Depth)  
yy = 14-28 (Box Width)  
zz = 06-24 (Box Height)  
a = R4, R6, R8 (Insulation factor)



## INSULATED FURNACE SUPPORT BOX

### CA40xyyyg

### Style 12" High

### CA40xyyyaabbg Cutout Style 10" High

xx = 18-48 (Overall Box Length)  
yy = 17-30 (Overall Box Width)  
aa = 24, 25 (Cutout Length)  
bb = 08, 10, 12 (Cutout Width)  
g = R4, R6, R8 (Insulation factor)



## RETURN AIR PAN, NO COLLAR

### CA58xyyyzza

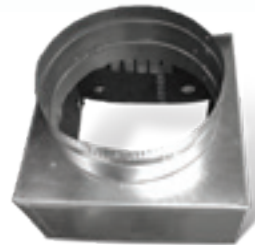
xx = 10-24 (Wdith)  
yy = 10-24 (Length)  
zz = 04-16 (Height, Standard = 4")  
a = R4, R6, R8 (Ductboard Insulation factor)



## RETURN AIR BOX – INSULATED

### CA59xyyyzza No Collar

xx = 10-24 (Wdith)  
yy = 10-24 (Length)  
zz = 10-24 (Height, Standard = 6")  
a = R4, R6, R8 (Insulation factor)



## INSUL. RETURN AIR BOX W/COLLAR

### CA60xyyyzza w/Collar

xx = 06-24 (Wdith)  
yy = 06-24 (Length)  
zz = 06-20 (Collar diameter)  
a = R4, R6, R8 (Ductboard Insulation factor)



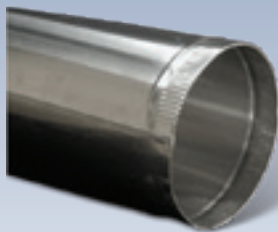
## INSUL. STACKHEAD, RETURN AIR

### SX76xyyyaabbg

xx = 14, 16, 20, 25 (Wall register width)  
yy = 20, 24, 25 (Wall register height)  
aa = 14, 16, 20, 25 (Floor opening width)  
bb = 10, 12 (Floor opening length)  
g = R4, R6, R8 (Insulation factor)



## ALUMINUM PRODUCTS



### ALUMINUM PIPE

**AP01xxyy**

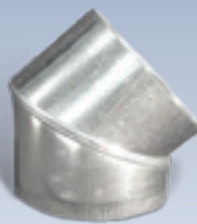
xx = 03-18 (Diameter)  
yy = 24, 48, 60 (Length)



### ALUMINUM ELBOW

**AX53xx**

xx = 03-16 (Diameter)



### ALUMINUM ANGLE

**AX50xx**

xx = 03-16 (Diameter)



### ALUMINUM LONG RADIUS ELBOW

**AX54xx**

xx = 03-16 (Diameter)  
Use in dryer venting applications



### ALUMINUM COLLAR

**AX10xx (412A) No Crimp**

**AX11xx (413A) Crimped**

xx = 04-12 (Diameter)



### ALUMINUM LONG COLLAR

**AX12xx (416A)**

xx = 04-12 (Diameter)



### ALUMINUM REDUCER

**AX41xxyy (431A)**

xx = 04-16 (Larger diameter)

yy = 03-14 (Smaller diameter)



### ALUMINUM TRIM COLLAR

**AX09xx**

xx = 04-12 (Diameter)



### ALUMINUM RAIN CAP

**AX28xx (30A)**

xx = 04-12 (Diameter)



### ALUMINUM TEE

**AX70xx (352A)**

xx = 04-16 (Diameter)

## BLACK STEEL PRODUCTS



### BLACK PIPE

**BP01xxyy**

xx = 04-14 (Diameter)  
yy = 12, 24 (Length)



### BLACK DRAWBAND

**BX01xx (410B)**

xx = 03-14 (Diameter)



### BLACK CAP REDUCER

**BX23xxyy (451B) No Crimp**

**BX24xxyy (450B) Crimped**

xx = 04-06 (Smaller Diameter, Crimp)

yy = 06-08 (Larger Diameter)



### BLACK TAPERED REDUCER

**BX40xxyy (430B) No Crimp**

**BX41xxyy (431B) Crimped**

xx = 03-09 (Smaller Diameter, Crimp)

yy = 04-12 (Larger Diameter)



### BLACK TRIM COLLAR

**BX10xx**

xx = 04-14 (Diameter)



### BLACK CAP

**BX21xx (421B) No Crimp**

**BX22xx (422B) Crimped**

xx = 04-14 (Diameter)

## BLACK STEEL PRODUCTS (CONT.)



### BLACK TAPERED INCREASER

**BX43xxyy (432B) Crimp**

xx = 03-09 (Smaller Diameter)

yy = 04-12 (Larger Diameter, Crimp)



### BLACK ANGLE

**BX50xx**

xx = 06-14 (Diameter)



### BLACK ELBOW

**BX53xx**

xx = 04-14 (Diameter)



### BLACK TEE

**BX70xx (352B)**

xx = 04-14 (Diameter)

## STAINLESS PRODUCTS



### ROUND STAINLESS STEEL PIPE

**NP01xxyy**

xx = 16-35 (Diameter)

yy = 12-36 (Length)

Hammer Lock



### STAINLESS STEEL TRIM COLLAR

**NX10xx**

xx = 04-16 (Diameter)



### STAINLESS STEEL RAIN CAP

**NX28xx (30SS)**

xx = 03-16 (Diameter)



### STAINLESS STEEL ADJ. ELBOW

**NX53xx**

xx = 03-24 (Diameter)



### STAINLESS STEEL START COLLAR

**NX11xx (413S) Crimp**

xx = 04-18 (Diameter)



### STAINLESS TAPERED REDUCER

**NX41xxyy (431S) No Crimp**

xx = 03-14 (Smaller Diameter)

yy = 04-18 (Larger Diameter)



### STAINLESS STEEL CONNECTOR

**NX58xx**

xx = 06-08 (Diameter)



### STAINLESS STEEL DRAWBAND

**NX01xx (410S)**

xx = 03-12 (Diameter)



### STAINLESS STEEL CAP

**NX21xx (421S) Crimp**

xx = 03-14 (Diameter)



### STAINLESS STEEL ADJ. ANGLE

**NX50xx**

xx = 03-20 (Diameter)



### STAINLESS STEEL TEE

**NX70xx (352S)**

xx = 03-18 (Diameter)

All branches equal size

#### STAINLESS STEEL SPECS

Standard 304 Grade,  
24GA Stainless

## STEEL SHEETS

### GALVANIZED STEEL SHEETS

GS01xxyyyzz

Specify G30, G60, or G90

### STAINLESS STEEL SHEETS

NS01xxyyyzz

### BLACK STEEL SHEETS

BS01xxyyyzz

### PVC COATED STEEL SHEETS

VS01xxyyyzz

### ALUMINUM SHEETS

AS01xxyyyzz

xx = 24, 36, 48 (Width)  
yyy = 096, 120 (Length)  
zz = 30, 28, 26, 24, 22 (GA)  
Call for latest availability and pricing

*Lukjan offers flat sheets as a convenience to its customers and will be happy to ship these along with an order for other prefabricated sheet metal products. Minimum order is 25 sheets per type (26GA - 4x8, etc.).*

## MISCELLANEOUS



### LUKJAN PRODUCT CATALOG

LC01

Specify quantity



### DUCT SIZING CALCULATOR

LC02

Specify quantity

### GALVANIZED ROOF FLASHING

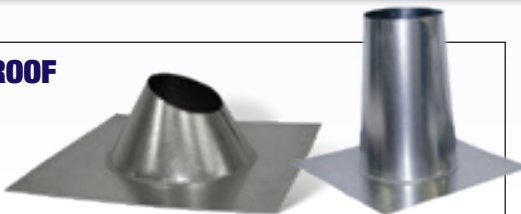
EX20xxzz

xx = 03-34 (Diameter)

zz = 22, 24, 26 (GA)

Standard is Pitched

**Options:** TC (Tall Cone)



### GALVANIZED RAIN CAP

RX28xx (30)

xx = 03-36 (Diameter)



### GALVANIZED DRAWBAND

RX01xx (410)

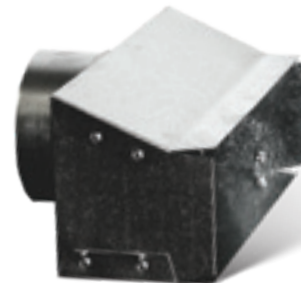
xx = 03-20 (Diameter)



### GALVANIZED CHIMNEY THIMBLE

RX05xx (415)

xx = 03-12 (Diameter)



### RANGE HOOD

SX86xxyyyz

xx = 03 (Range Hood width)

yy = 10 (Range Hood length)

zz = 04-07 (Diameter)



### GALVANIZED TRIM COLLAR

RX09xx

xx = 03-36 (Diameter)

26GA sizes 3"-22", 24GA 24"-36"



### WELDED CONDENSING UNIT BRACKET

EX40xxyy

xx = 30 (Width)

yy = 30, 36, 42 (Length)

Rated at 800 lbs.



Lukjan has extensive manufacturing capabilities available and can help design and build custom products and solutions for any job. Whether it's new home construction, retrofit or light commercial applications, Lukjan can build quality sheet metal products and develop solutions that can

save your customers custom fabrication costs, setup and installation time thereby giving them a competitive edge. Call us with your ideas and challenges and we'll see if we can develop a solution tailored for your market.

## STEEL INFORMATION

### Galvanized

Hot-dipped galvanized commercial steel is carbon steel sheet coated with zinc on two sides by the continuous hot-dipped process. This process results in a layer of zinc on each side of the steel sheet that is tightly adhering to the steel thru the formation of an iron-zinc alloy bonding layer that is formed by a diffusion process while the heated steel strip is in contact with the molten zinc. The galvanized coating is essentially pure zinc with trace amounts of aluminum (0.20 – 0.30%). The aluminum is added to improve the adhesion process between the zinc coating and the steel substrate.

Coating Weights are specified as G30, G60 and G90 and represent zinc weight (mass) for both sides of the galvanized sheet. G30 = 0.30 oz/ft<sup>2</sup>, G60 = 0.60oz/ft<sup>2</sup> and G90 = 0.90 oz/ft<sup>2</sup>. G30 is the most commonly used for residential HVAC and G90 used primarily in commercial applications.

### Galvanneal

Galvanneal is similar to Galvanized in that they are both made by the hot-dip coating process. The main difference in the production process is that, to make a galvanized coating, the strip is further heated by passing it through a furnace directly above the coating bath. By heating to approximately 1000 to 1050°F (538 to 565°C) and holding the strip at this temperature for a specific amount of time, the zinc coating alloys with iron by diffusion between the molten zinc and iron from the steel strip. The result is that the final product has a coating that is an alloy of approximately 90% zinc and 10% iron. The final iron concentration depends on the heating cycle since the total amount of diffusion is a function of the time/temperature cycle. One of the primary attributes of the galvanized coating is that the surface accepts paint very readily and the zinc-iron alloy coating can be welded more easily than galvanized and the coating is harder than a galvanized coating and is thus more resistant to scratching and manufacturing damage.

Common Coating Weights are designated as A25, A40 and A60. (A25 = 0.25 oz/ft<sup>2</sup> both sides)

### Galvalume

Galvalume steel is carbon steel coated with an aluminum zinc-alloy. The typical composition of the coating is 55% aluminum and 45% zinc. The coating is applied to the base metal in a continuous hot dip coating method. Galvalume is a product of choice for most agricultural, commercial, industrial and rural applications and thus not as economical for residential HVAC applications.. Under typical corrosive conditions, the coating generally will last much longer than a Galvanized coating of comparable thickness. Galvalume is two to four times as corrosion resistant as G 90 coated steel in outdoor marine, rural, and industrial environments. Galvalume will maintain its bright appearance and reflectivity in long-term service at temperatures up to 600 degrees Fahrenheit. The aluminum-zinc alloy coating provides excellent atmospheric corrosion resistance in a wide range of environments under many diverse conditions. The alloy coating of aluminum and zinc gives a combination of long-term corrosion resistance and galvanic protection at scratches and cut edges. Galvalume sheet can be arc welded with the shielded metal-arc and gas metal-arc processes.

Coating Weights are defined as AZ-50, AZ-55 and AZ-60. (AZ55 = 0.55 oz/ft<sup>2</sup> both sides)

### Stainless Steel

Stainless Steels are iron-base alloys containing Chromium. Stainless steels usually contain less than 30% Cr and more than 50% Fe. Stainless Steel is not a single metal but an alloy that is a material made from two or more separate elements alloyed or "melted" together. They attain their stainless characteristics because of the formation of an invisible and adherent chromium-rich oxide surface film. This oxide establishes on the surface and heals itself in the presence of oxygen. Corrosion resistance and mechanical properties are commonly the principal factors in selecting a grade of stainless steel for a given application.

Type 304 (18-8) is an austenitic steel possessing a minimum of 18% chromium and 8% nickel, combined with a maximum of 0.08% carbon. The 18% minimum chromium content provides corrosion and oxidation resistance. Type 304, or one of its modifications, is the material specified more than 50% of the time whenever a stainless steel is used.

Type 316 is also austenitic, non-magnetic, and thermally non-hardenable stainless steel like Type 304. What distinguishes Type 316 from Type 304 is the addition of molybdenum up to a maximum of 3%. The molybdenum gives 316 better overall corrosion resistant properties than Grade 304, particularly higher resistance to pitting and crevice corrosion in chloride environments.

### AglON Anti-microbial Coated Steel

AglON is an anti-microbial compound containing as the name implies, silver IONs that react with moisture to inhibit mold and mildew growth. When the silver ions come into contact with bacteria and other microbes, their chemical interaction disrupts electron transfer and respiration, suppressing microbe growth on the product. The AglON anti-microbial compound is blended

into a paint system, which is applied to the steel using a continuous-roll coil coating process. The coating is cured at more than 400°F, eliminating VOC (volatile organic compound) emissions.

The compound can be applied to either carbon or stainless steel, coated on one or both sides. The AglON antimicrobial compound has been registered with the Environmental Protection Agency (EPA) for use in heating, ventilating and air conditioning components.

### PVC Coated Steel

Polyvinyl chloride (PVC)-coated steel is used for fume exhaust, underslab, and underground duct systems. The PVC coating is applied to both sides of the steel with the exterior typically 4 mil thickness to provide maximum corrosion protection and an interior coating of one mil.

### Black Coated Steel

Black coated steel is a standard 24GA steel with a high temperature, scratch resistant black paint coating one side. Various coatings exist but all provide added protection of the steel surface and some resistance to discoloration in higher heat applications.

### Aluminum

Aluminum Alloy 3003-H14 is an excellent metal for general sheet metal work where only moderate strength but superior corrosion resistance is required. The terminology for the thickness of aluminum sheets does not use a Gauge number – like Galvanized or other carbon steel – it is instead requested by its' actual decimal thickness in inches. There are many alloys of Aluminum; 3003 is widely used as a general-purpose alloy for moderate-strength applications requiring good workability. The density of aluminum is approximately 1/3 that of galvanized steel.



**LUKJAN IS A LONGSTANDING MEMBER OF THE AIR DISTRIBUTION INSTITUTE (ADI) AND PARTICIPATES IN OTHER ASSOCIATIONS DEDICATED TO THE ADVANCEMENT OF THE HVAC INDUSTRY.**

## **LUKJAN METAL PRODUCTS FAMILY OF COMPANIES**

### **LUKJAN NORTH**

P.O. BOX 357  
645 INDUSTRY ROAD  
CONNEAUT, OHIO 44030  
P: 440.599.8127 F: 440.593.6237  
[sales@lukjan.com](mailto:sales@lukjan.com)

### **LUKJAN SOUTH**

111 KINGS ROAD  
KINGS MOUNTAIN, NC 28086  
P: 704.734.0544 F: 704.734.0993  
[orders.south@lukjan.com](mailto:orders.south@lukjan.com)

### **LUKJAN MIDWEST**

780 RIVER AVE. SOUTH  
PRAIRIE FARM, WI 54762  
P: 800.596.4400 F: 715.455.1110  
[orders.midwest@lukjan.com](mailto:orders.midwest@lukjan.com)

### **LUKJAN GREAT PLAINS**

1 GREENWOOD ROAD  
SIDNEY, NE 69162  
P: 308.210.9710 F: 308.210-9720  
[orders.greatplains@lukjan.com](mailto:orders.greatplains@lukjan.com)

